

MOSQUITO CONTROL IN PINELLAS COUNTY



Pinellas County uses a tactical approach to control mosquitoes beginning with careful monitoring of the mosquito population through mosquito traps located around the county.

Mosquitoes are more prevalent in warm, humid areas but even when general drought conditions exist in the county, mosquitoes can remain in swampy and tidal areas. Pinellas County Mosquito Control combats mosquito breeding by:

- Applying mosquito larvicide over targeted bodies of water and swampy areas
- Clearing vegetation that stops the natural flushing of lakes and salt marshes
- Spraying insecticide by truck or helicopter in infested, remote areas

DID YOU KNOW?

Female mosquitoes feed on blood to help their eggs develop.

Pinellas County carefully monitors viruses through “sentinel” chickens caged in eight target locations. Routine blood tests on these chickens detect virus antibodies—an early alert that a virus is present locally. Dead birds may also indicate a virus is in the area. Don’t touch a dead bird! Report sightings to the Florida Fish and Wildlife Conservation Commission at www.myfwc.com/bird.

Pinellas County complies with the Americans with Disabilities Act. To obtain an accessible format of this document, please contact the Pinellas County Communications Department at (727) 464-4600 /TDD (727) 464-4431.

90/80

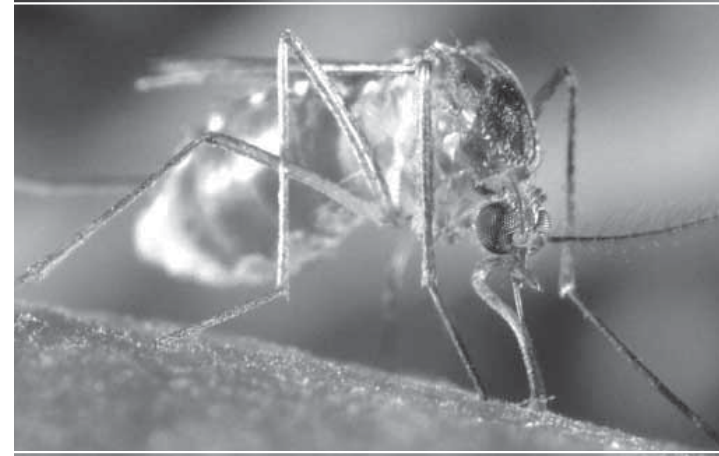
(727) 464-4600
www.pinellascounty.org

333 Chestnut Street
Clearwater, Florida 33756



Get the **BUZZ** on Protecting Yourself From

MOSQUITOES





Why are mosquitoes a problem?



Outdoor fun such as gardening, sports and a quiet evening outside can be ruined by buzzing, biting mosquitoes. Besides that annoying itch, mosquitoes can carry deadly diseases such as West Nile virus, St. Louis encephalitis—even canine heartworm.

WEST NILE VIRUS has the potential to infect horses and humans. Mosquitoes obtain the virus from feeding on infected birds. Of the 21 cases statewide in 2005, 18 were in Pinellas County. People infected with the West Nile virus can experience mild to severe flu-like symptoms. While usually mild, in serious cases the symptoms can cause death. There is no vaccine to prevent West Nile virus. Prevention centers on controlling mosquitoes and avoiding mosquito bites.

ST. LOUIS ENCEPHALITIS can affect the central nervous system and cause severe complications, even death. Mosquitoes can transmit the virus to animals and humans after feeding on infected birds. Just like West Nile virus, there is no vaccine to prevent St. Louis encephalitis.

CANINE HEARTWORM is a mosquito-borne parasite that lives in a dog's heart and lungs. The worms, which can grow up to a foot long, multiply until they clog the heart's major vessels and cause life-threatening heart failure. Cats can also be infected. The disease is transmitted when a mosquito bites an infected animal and then bites another pet. Heartworms can be prevented and heartworm disease can be treated.

PINELLAS COUNTY MOSQUITO CONTROL encourages you to remember the **5 Ds** to protect yourself and your family:

DUSK TO DAWN

Avoid mosquito mealtimes—early evening to early morning hours. If at all possible, avoid outdoor activities during these times.

DRESS WISELY

Wear light-colored clothing that covers most of your skin, especially if you have to be out when mosquitoes are active.

DEET

Repellents that contain DEET are most effective. Other recommended repellents include Picaridin and oil of lemon-eucalyptus.

- Read label directions carefully for EPA approval and for the approved usage before you apply it, especially on children.
- Some repellents are not recommended for children under three.
- Spray insect repellent on exposed skin and clothing but not under clothing.

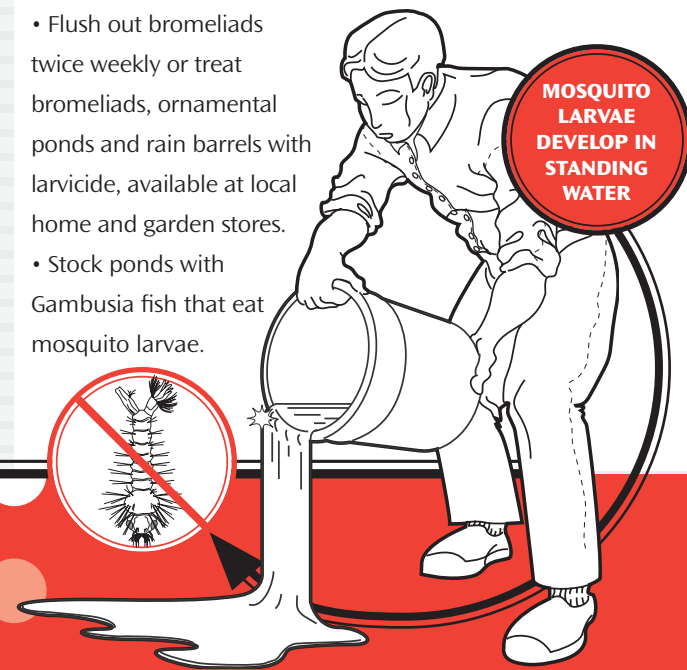
DRAIN STANDING WATER

Stop mosquitoes where they're born—the standing water where mosquitoes lay their eggs. Mosquitoes can develop in any water that stands more than four days. Two types of domestic mosquitoes are a common problem in Pinellas County: the yellow fever mosquito, *Aedes aegypti*, and the Asian tiger mosquito, *Aedes albopictus*. These mosquitoes, called “ankle-biters” because they tend to bite people below the knee, can quickly colonize a neighborhood, finding

standing water wherever available. One mosquito will try to bite, then fly away at the slightest movement and continue the process until it gets a blood meal, making one mosquito seem like several.

YOU CAN JOIN THE FIGHT TO CONTROL MOSQUITOES!

- Regularly check and empty water in items such as flower pots and saucers, wheelbarrows, trash cans, recycling containers, buckets, discarded tires and plastic wading pools. Drill holes in tire-swings to prevent water collection.
- Store small boats upside down so water won't accumulate.
- Be sure that rain doesn't collect in tarps covering boats or other stored items.
- Replace water in bird baths at least once a week.
- Change the water in pet dishes daily.
- Clean out gutters so they won't hold water.
- Flush out bromeliads twice weekly or treat bromeliads, ornamental ponds and rain barrels with larvicide, available at local home and garden stores.
- Stock ponds with Gambusia fish that eat mosquito larvae.



FOR MORE INFORMATION



• **Public Works Mosquito Control Division**
(727) 464-7503 • www.pinellascounty.org/mosquito

- **Pinellas County Extension**
(727) 582-2100 • www.pinellascounty.org/extension
- **Pinellas County Animal Services**
(727) 582-2600 • www.pinellascounty.org/animalservices
- **Pinellas County Health Department**
(727) 824-6932 • www.pinellashealth.com