

# Legislative, policy and funding strategies for enhancing homeless services

Deliverable # 8

December 7, 2005

## The Homeless Initiative

Prepared by:

Herbert A. Marlowe, Jr.  
Principal  
Arrington-Marlowe, LLC

Final Report

## Table of Contents

Introduction	3
Method	3
Findings	3
Recommendations	13
Appendices	
A: Summary of focus group results	21
B: Separate focus group results	26
C: Ideas for additional funding	67

## Introduction

The analyses reported in other deliverables of this project have determined that a focus on prevention services, system navigation and permanent supportive housing would reduce the number of homeless in the county significantly in a manner that represents a cost-beneficial use of funds. The purpose of this deliverable is to identify a strategy or set of strategies which would enable the findings of previous deliverables to be implemented.

To implement the findings of this initiative, two types of funds will be required. Program funds will be needed to support the variety of services proposed. Capital funds will be required to construct the permanent supportive housing facilities proposed in the recommended model. Separate strategies will be proposed for each.

## Method

A separate deliverable of this project involved an analysis of various funding sources and the potential amounts those sources could generate. This report will utilize that data, along with the gaps analysis report, to determine those funding strategies most appropriate and capable of implementing the recommended model. The funding sources report not only identified sources and amounts but also delineated actions required to institute the funding.

The above reports, plus Policy Group discussions, meetings with the County Commission, review of the FMHI polling data, review of national polling data on health and human service concerns and priorities of general citizens and focus groups conducted with registered voters on health and human service issues, form the background and context for the strategies formulated in this report.

## Findings

This section summarizes data from a variety of sources that is significant from the perspective of legislative strategy. One source is formal data sources which reflect public opinion surveys, focus group surveys or formal need assessments.

A second source is interactions in various forums in Pinellas County in which strategy related topics have been discussed.

## I. Formal Data Sources

### Public Opinion Data

1. There is broad public support for addressing homelessness and related issues such as poverty. Some specific examples include:

- 57% of Americans agree strongly or somewhat that with so many poor and homeless that America is failing to live up its ideals.<sup>1</sup>
- 68% of Michigan residents indicated that they would be willing to pay \$25 more in taxes to reduce homelessness<sup>2</sup>.
- 70% of the public believe local government is not doing enough to ensure affordable housing.<sup>3</sup>
- Survey questions asking about "the poor" elicit far more positive attitudes than those asking about "welfare." For example, while majorities want the problems of the poor to be a priority for Congress, people are also divided on whether "welfare recipients" really need the help. In survey results, the poor are characterized as people who work hard, but just can't earn enough money to support their families, and Americans show broad support for a number of proposals to help them make ends meet. By contrast, Public Agenda's research has suggested that for most Americans, the term "welfare" seems to evoke a vision of a failed and fundamentally flawed government system reviled both by those on welfare and the general public.<sup>4</sup>
- 29% of Americans say that poverty and homelessness is a very important issue and 42% say it is important. 24% said the issue is moderately important and 4% said it was unimportant.<sup>5</sup>
- 72% of Floridians support increased public spending for the elderly.<sup>6</sup>

---

<sup>1</sup> [http://www.publicagenda.org/press/press\\_release\\_detail.cfm?list=48](http://www.publicagenda.org/press/press_release_detail.cfm?list=48)

<sup>2</sup> <http://sun.science.wayne.edu/~ptoro/cusnews1.htm>

<sup>3</sup> Ong, op. cit.

<sup>4</sup> [http://www.publicagenda.org/issues/red\\_flags.cfm?issue\\_type=welfare](http://www.publicagenda.org/issues/red_flags.cfm?issue_type=welfare)

<sup>5</sup>

[http://www.publicagenda.org/issues/pcc\\_detail2.cfm?issue\\_type=welfare&concern\\_graphic=ccwelfarepriorityRF.jpg](http://www.publicagenda.org/issues/pcc_detail2.cfm?issue_type=welfare&concern_graphic=ccwelfarepriorityRF.jpg)

<sup>6</sup> Ibid.

- 67% of Floridians support increased public support for low income families with children.<sup>7</sup>
- 70 to 75% of Americans favor poverty programs that help people get jobs and that require accountability.<sup>8</sup>
- In households with \$80,000 plus income and in households with \$125,000 plus income the belief that local governments don't do enough for the poor is held by 3 to 2 ratio over those who believe enough is being done<sup>9</sup>.
- Fifty-three percent of all adults think the government should do more to help the needy, even if it means taking on more debt or higher taxes, while 35 percent think government can't afford to do anything more. And half (50%) feel that government benefits today don't go far enough to help poor people live decently<sup>10</sup>.
- 18% of Americans worry a great deal about being poor.<sup>11</sup>
- 44% of Americans believe people on welfare could get along without it if they really tried, 47% believe people really need the help.<sup>12</sup>
- 45% of American's worry that people take advantage of welfare.<sup>13</sup>
- Table 1 shows public beliefs about the causes of poverty<sup>14</sup>

---

<sup>7</sup> *ibid*

<sup>8</sup> McLaughlin and Associates, July 23, 2002, p. 50; McLaughlin and Associates, June 2003, p. 30. [http://www.ppionline.org/documents/poverty&public\\_opinion\\_0404.pdf](http://www.ppionline.org/documents/poverty&public_opinion_0404.pdf)

<sup>9</sup> Ong, P. & Haselhoff, K. (2005). "Residents Say Local Government Is Not Doing Enough For the Poor ." *SCS Fact Sheet*, Vol. 1, No. 6, UCLA Lewis Center for Regional Policy Studies.

<sup>10</sup> <http://www.issuespa.net/polls/point/13476/13462/> 2005

<sup>11</sup>

[http://www.publicagenda.org/issues/pcc\\_detail2.cfm?issue\\_type=welfare&concern\\_graphic=ccwelfareworry.jpg](http://www.publicagenda.org/issues/pcc_detail2.cfm?issue_type=welfare&concern_graphic=ccwelfareworry.jpg)

<sup>12</sup>

[http://www.publicagenda.org/issues/pcc\\_detail2.cfm?issue\\_type=welfare&concern\\_graphic=ccwelfareneedRF.jpg](http://www.publicagenda.org/issues/pcc_detail2.cfm?issue_type=welfare&concern_graphic=ccwelfareneedRF.jpg)

<sup>13</sup> [http://www.publicagenda.org/issues/pcc\\_detail.cfm?issue\\_type=welfare&list=13](http://www.publicagenda.org/issues/pcc_detail.cfm?issue_type=welfare&list=13)

<sup>14</sup>

[http://www.publicagenda.org/issues/pcc\\_detail2.cfm?issue\\_type=welfare&concern\\_graphic=ccwelfarecause.jpg](http://www.publicagenda.org/issues/pcc_detail2.cfm?issue_type=welfare&concern_graphic=ccwelfarecause.jpg)

Table 1: Public beliefs about the causes of poverty

Causes of Poverty	Major	Minor	Not a cause	Don't know
Drug abuse	70%	24%	5%	2%
Medical bills	58%	32%	7%	2%
Decline in moral values	57%	29%	12%	3%
Too many part-time or low-wage jobs	54%	32%	10%	4%
Too many single parents	54%	32%	12%	2%
Poor people lacking motivation	52%	35%	9%	4%
Poor public schools	47%	36%	13%	4%
The welfare system	46%	37%	11%	7%
A shortage of jobs	34%	41%	23%	2%

2. There is concern about health care access and broad support for expanding access. Some specific examples include:

- The registered voters who participated in a series of focus groups in Pinellas County on health and human service issues made health access their first priority and were most willing to support additional taxes for increased access (see appendix a for specific responses)
- 76% of Floridians support increased public spending on health care<sup>15</sup>
- 81 percent of Americans favor increasing Medicaid and the Children’s Health Insurance Program, and only 15 percent oppose such an increase<sup>16</sup>
- Almost 50 percent of the American public says they are very worried about having to pay more for their health care or health insurance, while 42 percent report they are very worried about not being able to afford health care services<sup>17</sup>

<sup>15</sup> Florida Annual Policy Survey. 2004. Florida State University.

<sup>16</sup> “Poverty and Welfare: People’s Chief Concerns,” *Public Agenda*, 2004, [http://www.publicagenda.org/issues/major\\_proposals\\_detail.cfm?issue\\_type=welfare&list=5](http://www.publicagenda.org/issues/major_proposals_detail.cfm?issue_type=welfare&list=5).

<sup>17</sup> The Henry J. Kaiser Family Foundation. Health Care Worries in Context with Other Worries 2004. 04 October 2004

- In April 2005, over one-third of the public (35%) with health insurance said they were very worried about losing their coverage, and another seventeen percent said they were somewhat worried. However, to put these worries in context, it's important to note that a much higher proportion is worried about having to pay more for health care and insurance than is worried about losing their coverage.
- The public is concerned about the issue of the uninsured, with nearly eight in ten saying that increasing the number of Americans covered by health insurance is a very important priority<sup>18</sup>
- Seven in 10 (69%) say they would favor government action to provide health insurance for everyone, if it means higher taxes<sup>19</sup>.
- In 2000, more than six in ten adults (63%) knew that the number of Americans without health insurance had increased in the previous 10 years.<sup>20</sup> However, the public is less knowledgeable about who the uninsured are. Since 1994, around half the public has incorrectly believed that the uninsured are more likely to be unemployed or from families where no one is employed<sup>21</sup>.
- Majorities know that the uninsured are less likely than those with insurance to have had a recent physician visit (74%), to have a regular source of care (68%), to get needed care (64%), and to use preventive health services (62%). Two-thirds (65%) also know that the uninsured are more likely to put off seeking medical care. However, over half of Americans (52%) do not realize that the uninsured are more likely than the insured to have hospital or emergency room visits that could have been avoided, and 55% think that most people without health insurance are able to get medical treatment they need.

3. Public perceptions about mental health and substance abuse causes and solutions are mixed. Examples include:

- The public attributes mental illness to a mix of biological abnormalities and vulnerabilities to social and psychological stress (Link et al., in

---

<sup>18</sup> Kaiser Family Foundation. Health care poll. April 2005.

<sup>19</sup> <http://www.issuespa.net/polls/point/13476/13462/>. 2005

<sup>20</sup> Newshour with Jim Lehrer/Kaiser Family Foundation National Survey on the Uninsured, conducted Jan. 10 - Feb. 9, 2000.

<sup>21</sup> Urban Institute/Kaiser Commission on Medicaid & the Uninsured analysis of March 2002 Current Population Survey).

press). Yet, in comparison with the 1950s, the public's perception of mental illness more frequently incorporated violent behavior (Phelan et al., 1997). In other words, the perception of people with psychosis as being dangerous is stronger today than in the past (Phelan et al., 1997)<sup>22</sup>.

- When a scientific sample of Americans were asked about the seriousness of 36 health problems, illegal drugs and drug abuse ranked at the top of the list, with 57% believing it is more of a serious problem than it was five years ago. About 74% thought people using drugs such as crack, cocaine and heroin could stop, but they needed professional help outside of their families to do so, and 13% thought they could stop on their own. 47% of Americans personally knew someone who had been in drug abuse treatment. Of the 46% of Americans who favored more government spending on treatment, only 19% were strongly in favor of a tax increase to pay for it<sup>23</sup>.

#### 4. Personal accountability and community rights are important considerations for many persons.

- When voters were asked about a candidate who wanted to fight chronic child hunger in the United States, but tied that to work requirements for parents and anti-fraud efforts, 80.7 percent of voters were more likely to vote for the candidate—and 38 percent were much more likely.<sup>24</sup>
- The public is sympathetic toward the homeless (and the poor in general), but there's a libertarian streak in public attitudes. If someone refuses shelter and decides to sleep on the street, that's up to them, the public seems to say. But as with other questions involving rights and responsibilities, the public appears to draw a line: the rights of one person end where the rights of another begin. In a recent Public Agenda survey, only one in 10 said a homeless man who isn't bothering anyone should be forced off the street. Three-quarters say he should be left

---

<sup>22</sup> U.S. Department of Health and Human Services. *Mental Health: A Report of the Surgeon General—Executive Summary*. Rockville, MD: U.S. Department of Health and Human Services, Substance Abuse and Mental Health Services Administration, Center for Mental Health Services, National Institutes of Health, National Institute of Mental Health, 1999.

<sup>23</sup> Substance abuse. 2001. Robert Wood Johnson Foundation.

<sup>24</sup> McLaughlin and Associates, July 23, 2002, p. 10.

[http://www.ppionline.org/documents/poverty&public\\_opinion\\_0404.pdf](http://www.ppionline.org/documents/poverty&public_opinion_0404.pdf)

alone. But if a homeless man seems disturbed and verbally threatens people – even if he never acts on the threats – more than half say he should be removed. Half also say the homeless should be moved out of a public park if they're driving families away and 71 percent say homeless people should be moved if they're driving away customers from a shopping area. Even in the last two scenarios, however, there's a substantial minority who thinks the situation is "too tough to call."<sup>25</sup>

## The FMHI Study

There is limited data on public opinion regarding health and human service issues. The recent FMHI study broadly engaged stakeholders and had a limited amount of general public opinion data. The results of this study are summarized below:

- The recent FMHI study concluded: “Recurrent top concerns that cut across all four areas of human services included: lack of affordable housing, transportation difficulties, and lack of health care for the un/underinsured, including lack of prescription assistance, funding restrictions, lack of common eligibility criteria, and a lack of communication and coordination. Interestingly, there is a sense that while many services are available in Pinellas County, knowledge of these services that are constantly changing in terms of capacity, funding, and requirements is greatly lacking not only from the public’s perspective, but between and among the providers”<sup>26</sup>.
  
- The priorities of the need assessment study were:
  - a. Transportation (both public and private);
  - B. Affordable Health Care (including behavioral health, in-home, and prescriptions); and
  - c. Affordable Housing (including emergency, transitional, and rental).

---

<sup>25</sup> [http://www.publicagenda.org/issues/red\\_flags.cfm?issue\\_type=welfare#homeless](http://www.publicagenda.org/issues/red_flags.cfm?issue_type=welfare#homeless)

<sup>26</sup> FMHI Needs assessment study. 2005. Pinellas County Government.

## The Registered Voter Focus Group Study

45 registered voters, balanced for age, gender, ethnicity and residence, participated in a series of three focus groups. One set of three was held in north county. Another set of three in mid-county and the third set of three in south county. Session three at each site focused on health and human services issues. A number of questions were asked and polled. The summary results will be found in appendix a. Appendix b provides a more detailed analysis by each separate group. Among the relevant conclusions that can be drawn from both the polling and the associated discussion are:

- Health care access is the single topic of highest concern. Participants saw it as key to many of the other issues and therefore viewed it as the more fundamental service or need to address. It was their top priority for an item to address (table A1), the one single item they would be most willing to pay additional taxes to support (table A2), the one single item they thought people they knew would pay additional taxes to support (table A3) and the area in which they most thought county government should take a leadership role (table A11). The group stressed that their support was for increased health care access, not insurance that would in their view simply further enrich insurance companies.
- Focus group participants favored funding sources that would support a broad range of health and human service needs rather than sources targeted to a specific issue. Table A4 reports this data. The two items favored were health care access (again, this group viewed this as the general solution which addressed many of the other topics) and a general health and human services fund. There was minimal to no support for funds targeted to more specific topics. No participant supported a funding source targeted specifically to homeless persons.
- There is distrust that public funds will be used as stated. This is not driven by local government decisions but by the actions of the state with respect to cost-shifting education funds and lottery receipts. This theme emerged in discussions as the participants explained their rationales for their polling choices.

- There is distrust that public funds will make an impact. Some respondents indicated that funds have been devoted to these issues for years but nothing has gotten any better. Again, this theme emerged in discussions as the participants explained their rationales for their polling choices.
- Participants indicated they believed approximately 1/3 of the community to be aware of the health and human service issues discussed in the focus groups.
- In terms of local government action on these items, over 50% of the participants believed that if the public were aware of these issues, they (the public) would expect that local governments take some actions to address them. In terms of informing people however, over 75% of the respondents believed that it would be harder than normal (normal being regular attempts to communicate to the public about civic issues) to communicate to the public about these issues for a variety of reasons. However, they did believe that over 50% of the general public are aware that private funds are inadequate and that the federal and state governments have been reducing funding for these issues.
- In terms of county government's role and responsibility on these topics, nearly 60% wanted the county to take a leadership role on health care access and slightly over 20% wanted it to take a leadership role on homeless issues.
- Finally, 75% of the participants would be willing to consider using a portion of the sales tax for health care issues. It is important to remember that they were not faced with choosing between specific capital projects and health care. Their responses could be different ~~is~~ if faced with more specific choices. Within this item a post-polling discussion indicated that sales taxes are preferred over property taxes because the tax burden is viewed as shared by tourists and visitors.

## Fiscal analysis of sources and needs

A prior report of the initiative has identified funding sources and projected revenues from those sources. Another report identified system gaps and the resources needed to fill those gaps. These analyses yield the following conclusions:

- Estimated revenues generated from a food and beverage tax will be inadequate by itself for the projected revenue requirements of the recommended model. An estimated amount based on population proportion between Pinellas and Miami-Dade counties yields an estimate of \$4 million annually. While significant, this amount by itself will not provide the full annual projected cost of \$10 million.
- A wide variety of funding sources exist for building housing. These sources appear to be adequate to meet housing construction goals.
- Either general revenue ad valorem and sales tax sources will generate adequate funding for the recommended model.

## II. Informal data sources

Other important information has been garnered during a variety of forums and meetings or through reviews of broader health and human service trends.

Extensive plans have been made for the penny extension. From meeting with both county staff and attendance at the local government manager's meetings, it is clear that local governments have made extensive plans for future use of the infrastructure surtax and that any reduction in that taxing source will generate the need for increases in ad valorem taxes.

At this point in time there is no emergent or recognized private sector leader to spearhead any funding initiative.

There are concerns about the effectiveness of current investments from the perspective of coordination and structure. It is an open question in the mind of many leaders whether the current way of doing business is appropriate and effective for the future.

Pressures to restrict Medicaid funding are likely to continue within the existing tax system of the state.

## Conclusions and Recommendations

### Program funding

This section presents a number of strategies to institute the program or clinical funding needed for the recommended model.

Strategy #1: Development of Housing, Health and Behavioral Health and Economic Well being networks.

These networks are strategically significant for three reasons. One, they provide a mechanism to optimize existing funding and position the county well for any future external funding. Second, if instituted as proposed, one of their first products will be system redesign plans which will address community concerns about coordination and structure. Third, they will provide a core of community leaders who understand these issues, their related nature and the actions the community needs to take to meaningfully address the issues.

Strategy #2: System redesign of direct and related systems.

As mentioned above, a key product of the networks is the development of system redesign plans for homeless services, health and behavioral health, housing and economic well-being. These plans will help identify where system gaps exist, how structure and processes could be changed to address those gaps, and where additional resources could be most effectively targeted.

Strategy #3: Incremental funding from ad valorem growth.

Based on data mentioned above, neither the Penny for Pinellas or a food and beverage tax appear viable options at this point. Neither does it appear there is broad support for an ad valorem increase specifically for homeless services. Therefore incremental funding from general revenue is the best option at this point.

Strategy #4: Impact evaluation.

The cost benefit analysis projects substantive reductions in the number of homeless under specified conditions. An impact evaluation should be designed and conducted to test the actual cost benefit and impact of the recommended model.

Strategy #5: Via the networks develop a civic leadership group that is informed and willing to lead efforts to greater community investment.

As noted in strategy one, there is a clear need for broad civic leadership on these issues and the networks provide a forum for that leadership to develop and coalesce.

Strategy #6: Research and development of model for comprehensive funding system.

Once the redesign plans have been developed, instituted and a higher level of confidence in funding needs established, the Health and Human Services Coordinating Council should develop a comprehensive funding system. This system may of course consist of a variety of funding sources, but consideration should be given to need and support for some sort of special taxing district similar to those established in the other major urban counties of the state.

Strategy #7: Development of public support for the comprehensive funding system.

This strategy will be relevant if there is a need for additional funding. Assuming for the purpose of this report that it will be, the role of civic

leaders becomes critical at this point. As often noted during the process of the project, civic or business sector leadership is critical to generating public commitment to increased resources. Given the operating assumption of this report that a more broadly directed or purposed funding source is preferred by the public, this means there are a limited number of options, some of which will require public approval to be enacted. Such an effort will require the involvement and leadership of the community's leadership.

Strategy #8: Establishment of comprehensive funding system.

Assuming there is an effort and it is successful, then the task will be to institute and operate a comprehensive funding approach. The integrated plans developed through the HHSCC will be critical at this point.

Strategy #9: Pursuit of external funds through the Policy Leadership Network and the HHSCC.

In addition to local funding, one key advantage of both the Policy Leadership Network and the HHSCC is that the community as a whole can pursue external funding sources in a more systematic and integrated manner which hopefully will lead to additional securing of external resources.

## Housing (Capital and Ownership/Rental Cost) Strategies

The above steps can provide the operational or program funding to prevent homelessness or provide those specialized services needed to maintain persons in housing. However, there is a separate need for housing stock itself that is affordable and for housing strategies that promote or facilitate affordability. If the community is to be successful in preventing or reducing homelessness, housing must be affordable to the lower paid sectors of the community. In addition, for those persons who need special supports, there must be housing stock designed for their needs. The former is referred to in this report as

attainable housing, the latter as permanent supportive housing. Both are critical.

The recommended strategies to address these housing issues include:

Strategy #1: Development of Housing Network.

Just as the Policy Group has been instrumental in moving an agenda for homelessness, there is the same need for a comprehensive, county-wide effort with respect to housing. These networks already exist at some level and the task is simply one of bringing already involved parties together to ensure countywide strategies are being promoted.

As conceptualized in the Health and Human Services Coordinating Council report, this Network would mirror the structure of the homeless network with a Policy Group of elected officials, appointed officials and private sector representatives. Staff working groups would serve to raise issues and choices just as the Coalition for the Homeless Strategic Planning Committee did.

Strategy #2: System redesign plan and five year plan for permanent supportive housing.

One of the proposed tasks of each network is to examine the existing system for developing housing in the county and propose improvements to it. These may be structural, policy-oriented, procedure-oriented and/or resource-oriented.

While addressing this question of system re-design, this group would also be charged with developing the plan and agreements that would construct the proposed 100 units of permanent supportive housing each year as proposed in the recommended model.

Strategy #3: Devise and recommended comprehensive capital funding strategies and local housing policies to develop new attainable housing stock.

The Housing Policy Group should review and develop specific responses or plans for the following options. Appendix C lists a range of funding strategies, some of which were deemed unfeasible at this time but may be of value in future years.

- Pursuit of federal and state funds
  - Action: Lobby for full funding of SHIP
  - Action: Lobby the federal government for restored support of federal programs
- Consider options for new local funding sources
  - Action: Identify Tax Increment Financing options for attainable housing
  - Action: Review issuance of tax exempt bonds for purchase of viable mobile home parks and other attainable housing sites
  - Action: Consider linkage fee for non-residential employment generating development
  - Action: Study methods to leverage local dollars against other public and private funding sources
  - Action: Review bonding options for other uses than already identified
  - Action: Explore other new sources of revenue for attainable housing program
- The Housing Network Policy Group should consider local housing policies which could increase the amount of attainable housing stock such as:
  - Inclusionary zoning
  - Public housing divestment strategy
  - Marketable development rights
  - Advocacy of a regional response re Sadowski
  - Housing trust funds
  - Land assembly
  - Advocacy of home rule re SHIP funds

Strategy # 4: Devise and recommended comprehensive housing support funding strategies to relevant funders.

The Housing Network Policy Group should develop strategies for how each of the following options should be considered and implemented if feasible:

- Centralization of section 8 sources;
- Provision of financial assistance targeted to housing stability.

Strategy #5: Support existing residents to retain their housing.

The Housing Network Policy Group should articulate strategies and plans to provide programs that enable owners to maintain, repair, and/or remodel their current housing or remain in their apartments or other form of rental housing.

Strategy #6: Assist residents striving to purchase homes.

The Housing Network Policy Group should articulate strategies and plans to provide educational resources that assist new homebuyers with the process of home purchase.

Strategy #7: Assist residents dislocated out of current housing.

The Housing Network Policy Group should articulate strategies and plans to ensure relocation options exist and residents facing displacement have knowledge in finding suitable alternatives. The beginning point for this analysis should be the policies and programs developed or in development by Pinellas County Government which provide a model or template for county-wide use.

Strategy #8: Ensure there is a balance of attainable housing options for the workforce.

The Housing Network Policy Group should articulate strategies and plans to ensure that as new jobs are created, a proportionate amount of

workforce housing should be made available in proximity to employment centers.

Strategy #9: Institute jurisdictionally consistent regulatory and land use approaches to foster attainable housing.

Consistent and overlapping with the proposed strategies of strategy #3, the Housing Network Policy Group should articulate strategies and plans that:

- Where available, consider Economic Development and Redevelopment Plan recommendations of each jurisdiction as to whether they include:
  - Urban densities in targeted employment areas for attainable housing;
  - The assembly and inventory of attainable housing sites.
- Consider an Inclusionary Housing program and develop options for specific features of such programs:
  - Consider standards for redevelopment/displacement projects to include attainable housing in new development;
  - Consider options for mandatory and incentive based standards for Inclusionary projects.
- Develop standards for relocation assistance programs at the local level for mobile home parks and other redevelopment projects;
- Promote infill incentives, such as reduced setbacks, lot sizes and/or parking; expedited permitting, calibrated impact fees, etc;
- Create Incentives for attainable housing through density bonuses and Floor to Area increases (FAR). Other actions should include:
  - Develop architectural standards for project review;
  - Targeted incentives for employment centers.
- Consider design based standards in-lieu of density standards for compatibility determination;
- Review deed restrictions that ensure long term retention of attainable units as ownerships change;
- Review County Government efforts already underway or being considered regarding land trusts, inclusionary zoning, and other tools to determine which policies and programs could be adopted county-wide.

Strategy #10 : Improve governance and relationships strategies to promote effective partnering for housing.

The strategies that the Housing Policy Group should consider include:

- Increase emphasis and attention that the Pinellas Planning Council gives to attainable housing issues;
- Consider a countywide Housing Trust Fund or some other form of non-profit Land Trust;
- Review how to more effectively leverage the Housing Authorities:
  - Action: Initiate discussions at the Pinellas Planning Council;
- Development of Regional relationships and approaches:
  - Action: Develop relationship with other agencies and governments who are dealing with similar challenges;
  - Action: Review Best Management Practices and learned lessons;
  - Action: Regional cooperative entity of some form.

Strategy #11: Ensure attainable and permanent supportive housing issues are linked with other community plans.

Specific actions which should be considered by the Housing Policy Group within this strategy include:

- Link housing to transportation, economic development and redevelopment, and Livable Communities efforts of the community as a whole;
- Use the Pinellas Planning Council as a mechanism for intergovernmental communication and planning re attainable housing issues as well as an educational forum;
- Ensure housing plans are reviewed by the Administrative Forum of the Health and Human Services Coordinating Council.

Appendix A: Summary of focus group results, health and human services

Health and human services focus group results

Table A1

<b>The issue I would most like to see addressed is...</b>			
Child abuse	8.1%		
Developmentally disabled	2.7%		
Domestic violence	2.7%		
Health care access	64.9%		
Homelessness	18.9%		
Mental illness	0.0%		
Substance abuse	0.0%		
Other	2.7%		
None	0.0%		
N	37		

Table A2

<b>The issue I would most likely pay additional taxes to impact is...</b>				
Child abuse	0.0%			
Developmentally disabled	5.4%			
Domestic violence	0.0%			
Health care access	70.3%			
Homelessness	13.5%			
Mental illness	2.7%			
Substance abuse	0.0%			
Other	2.7%			
None	5.4%			
N	37			

Table A3

<b>The issue people I know would most likely be willing to pay additional taxes to impact is...</b>	
Child abuse	2.7%
Developmentally disabled	2.7%
Domestic violence	0.0%
Health care access	70.3%
Homelessness	8.1%
Mental illness	2.7%
Substance abuse	0.0%
Other	10.8%
None	2.7%
N	37

Table A4

<b>If given the choice of a specialized fund for a specific issue or a general fund for all of them, people I know would most likely choose...</b>	
Child abuse	0.0%
Developmentally disabled	0.0%
Domestic violence	0.0%
Health care access	56.8%
Homelessness	0.0%
Mental illness	0.0%
Substance abuse	0.0%
Other	5.4%
General fund	37.8%
N	37

Table A5

<b>Of the health and human services issues we have discussed the public is...</b>	
Fully aware	5.4%
Somewhat aware	32.4%
Unsure	16.2%
Mostly unaware	40.5%
Fully unaware	5.4%
N	37

Table A6

<b>If the public understood these issues how likely are they to support local government action</b>	
Highly likely	2.7%
Likely	54.1%
Unsure/maybe	29.7%
Unlikely	10.8%
Highly unlikely	2.7%
N	37

Table A7

<b>If the public understood these issues how likely are they to support local government action that would require a local tax increase</b>	
Highly likely	0.0%
Likely	45.9%
Unsure/maybe	35.1%
Unlikely	16.2%
Highly unlikely	2.7%
N	37

Table A8

<b>Informing people about these issues ...</b>	
Just a matter of a good information effort	27.0%
Will be harder than normal, people had rather not know	35.1%
Will be harder than normal, too discouraging	16.2%
Will be harder than normal for some other reason	21.6%
N	37

Table A9

<b>In terms of addressing these issues the public I know</b>	
Believes it should be left to private charities	2.7%
Believes it should be a partnership of private charities and public agencies	43.2%
Believes it is a fundamental responsibility of government with supplements by private charities	48.6%
Other	5.4%
N	37

Table A10

<b>In terms of people I know</b>	
1. Most believe private charity has adequate funds to address these issue	0.0%
2. Most people believe the state or federal government adequately fund these services	2.7%
3. 1 and 2	8.1%
4. Most know private funds aren't nearly enough	2.7%
5. Most know the state and feds are cutting back	0.0%
6. 4 and 5	51.4%
7. 1 and 5	18.9%
8. 2 and 4	2.7%
9. Some other view	13.5%
N	37

Table A11

<b>The issue that County Government should lead on is...</b>	
Child abuse	2.7%
Developmentally disabled	2.7%
Domestic violence	0.0%
Health care access	59.5%
Homelessness	21.6%
Mental illness	0.0%
Substance abuse	2.7%
Other	10.8%
None	0.0%
N	37

Table A12

<b>Would you consider taking a portion of Penny for Pinellas to spend on health issues of concern to the broad community...</b>	
Yes	75.7%
No	24.3%
N	37

## Appendix B: Registered Voter Focus Group results, health and human services

HHS poll Registered Voters

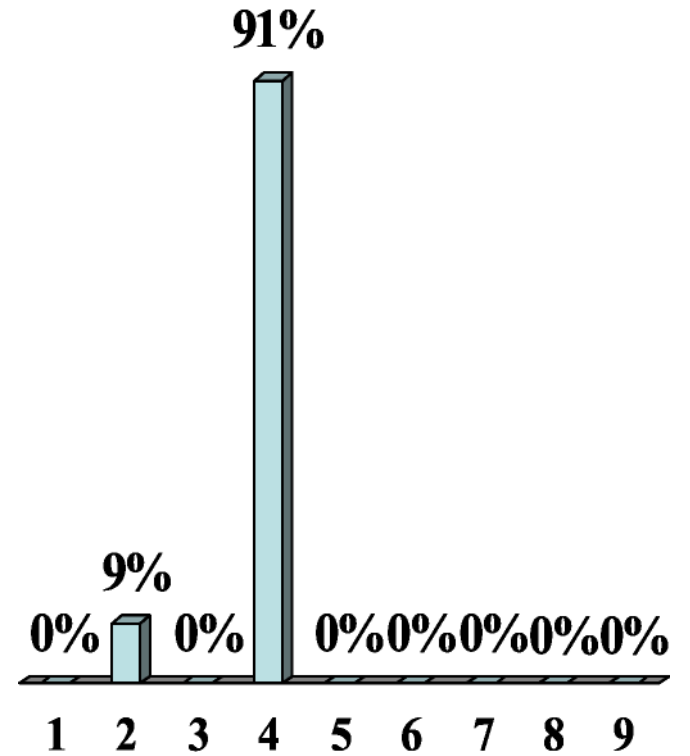
Focus Group

North County, Session 3, Vers 2

The issue I would most like to see

addressed is...

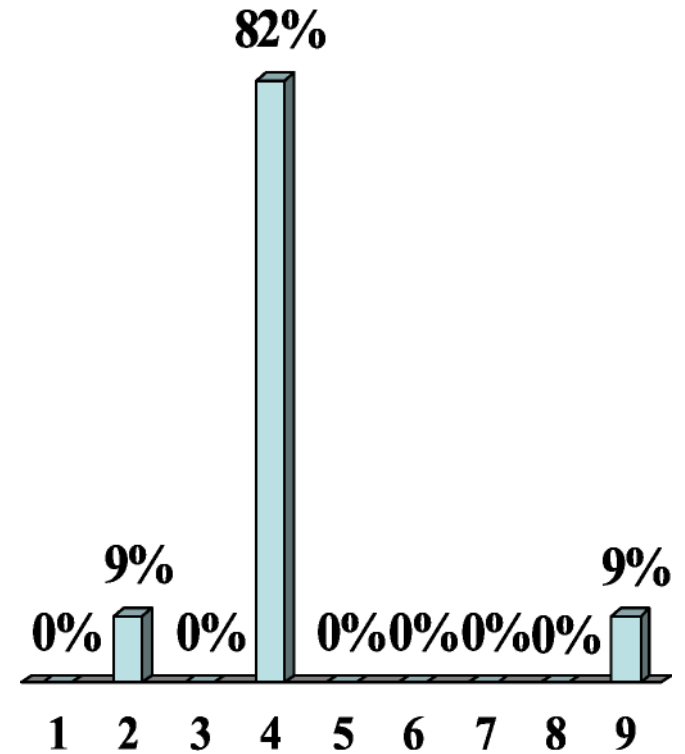
1. Child abuse
2. Developmentally disabled
3. Domestic violence
4. Health access
5. Homelessness
6. Mental illness
7. Substance abuse
8. Other
9. None



The issue I would most likely pay

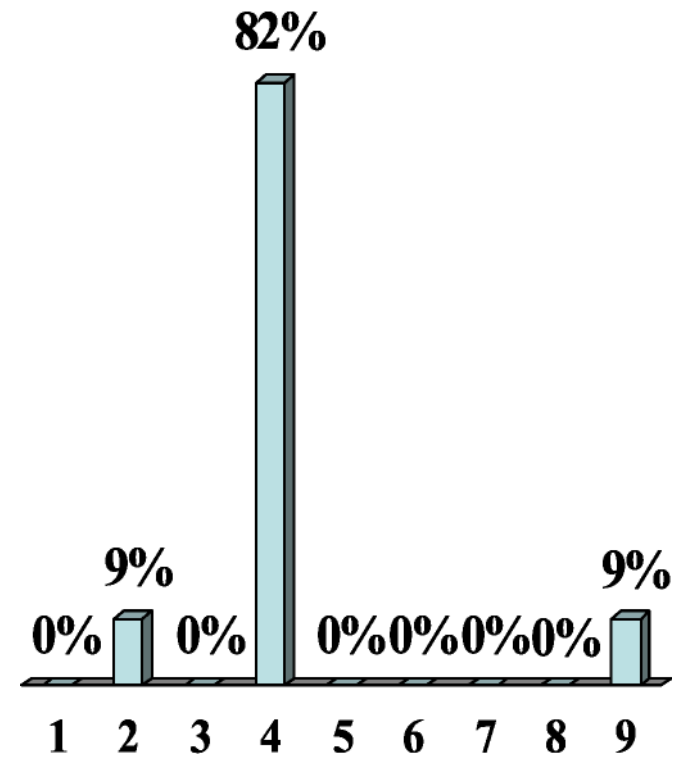
additional taxes to impact is...

1. Child abuse
2. Developmentally disabled
3. Domestic violence
4. Health access
5. Homelessness
6. Mental illness
7. Substance abuse
8. Other
9. None



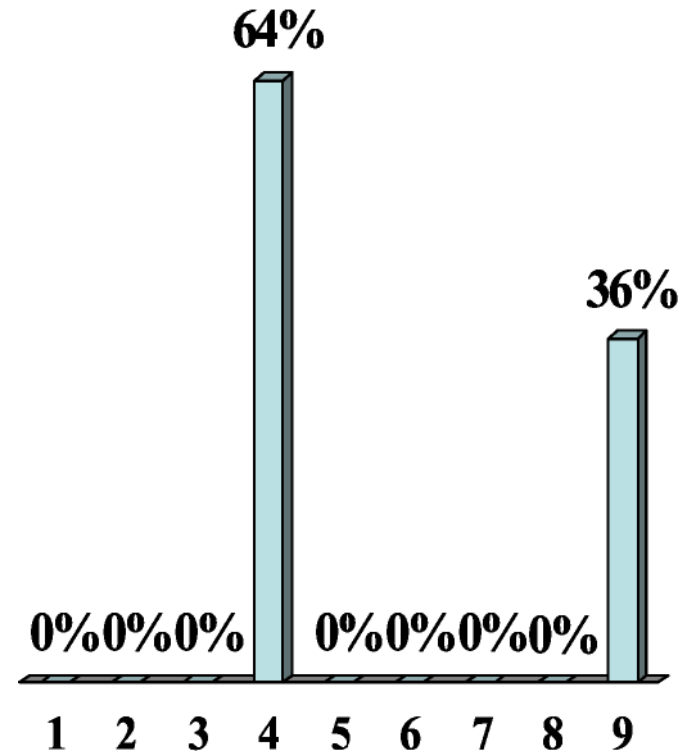
The issue people I know would most likely be  
willing to pay additional taxes to impact is...

1. Child abuse
2. Developmentally disabled
3. Domestic violence
4. Health access
5. Homelessness
6. Mental illness
7. Substance abuse
8. Other
9. None



If given the choice of a specialized fund for a specific issue or a general fund for all of them, people I know would most likely choose...

1. Child abuse
2. Developmentally disabled
3. Domestic violence
4. Health access
5. Homelessness
6. Mental illness
7. Substance abuse
8. Other
9. General fund



Of the health and human services issues we

have discussed the public is...

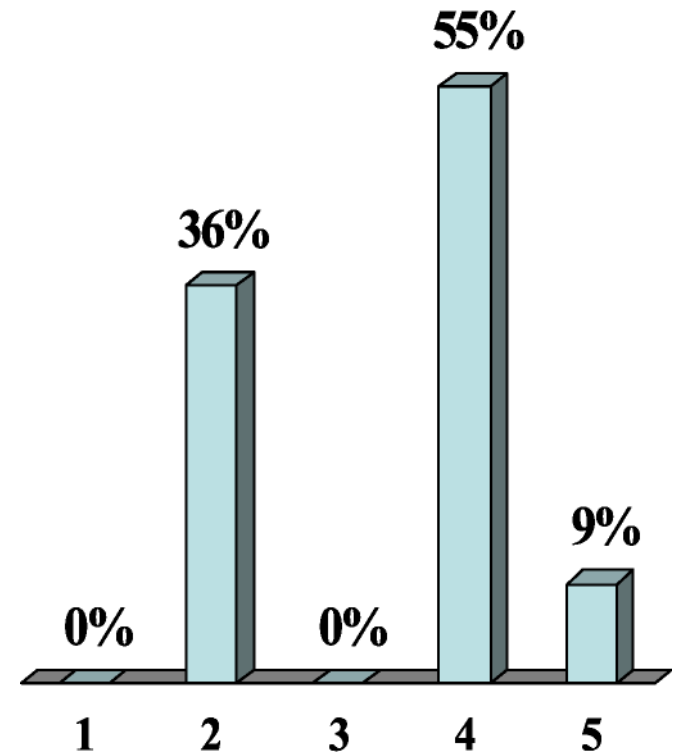
1. Fully aware

2. Somewhat aware

3. Unsure

4. Mostly unaware

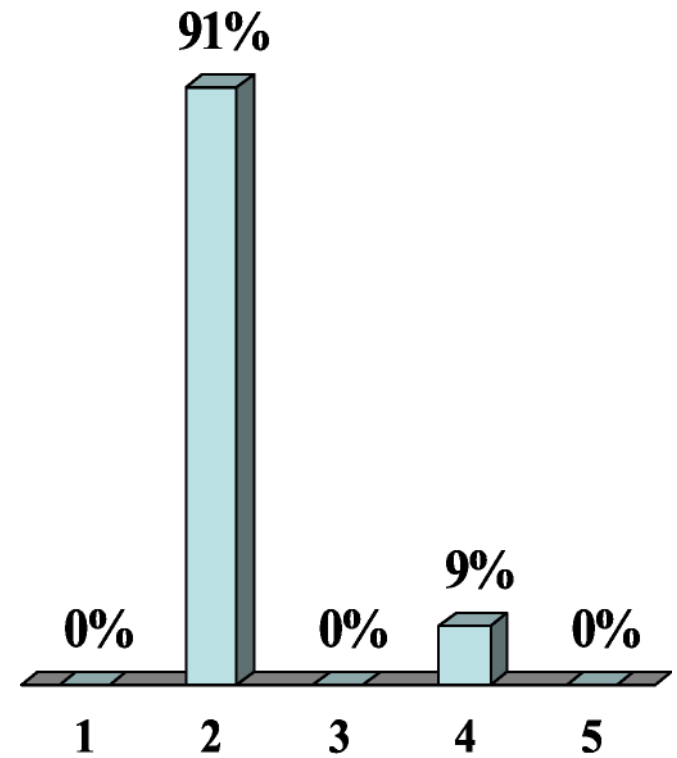
5. Fully unaware



If the public understood these issues how likely are they to support local government

action

- 1. Highly likely
- 2. Likely
- 3. Unsure/maybe
- 4. Unlikely
- 5. Highly unlikely



If the public understood these issues how likely are

they to support local government action that would

require a local tax increase

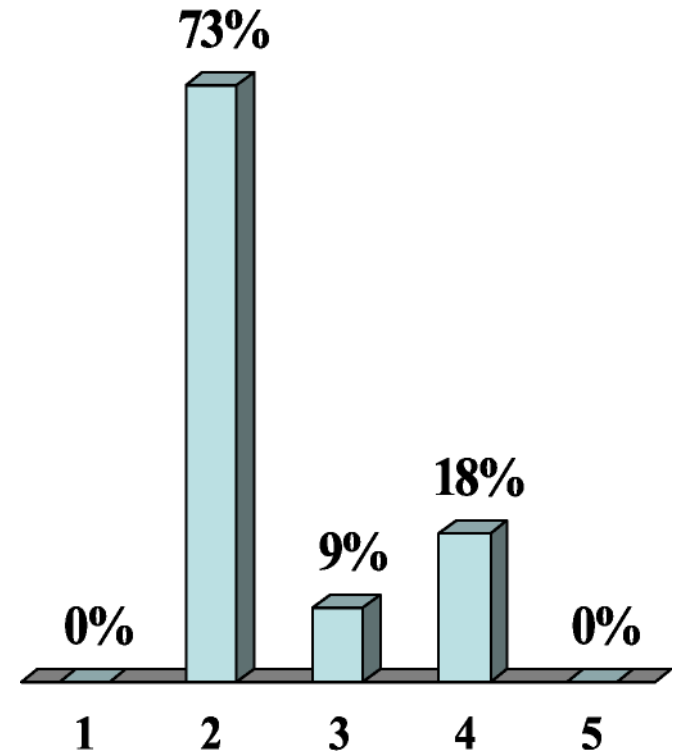
1. Highly likely

2. Likely

3. Unsure/maybe

4. Unlikely

5. Highly unlikely



Informing people about these

issues ...

1. Just a matter of a good

information effort

2. Will be harder than

normal, people had rather

not know

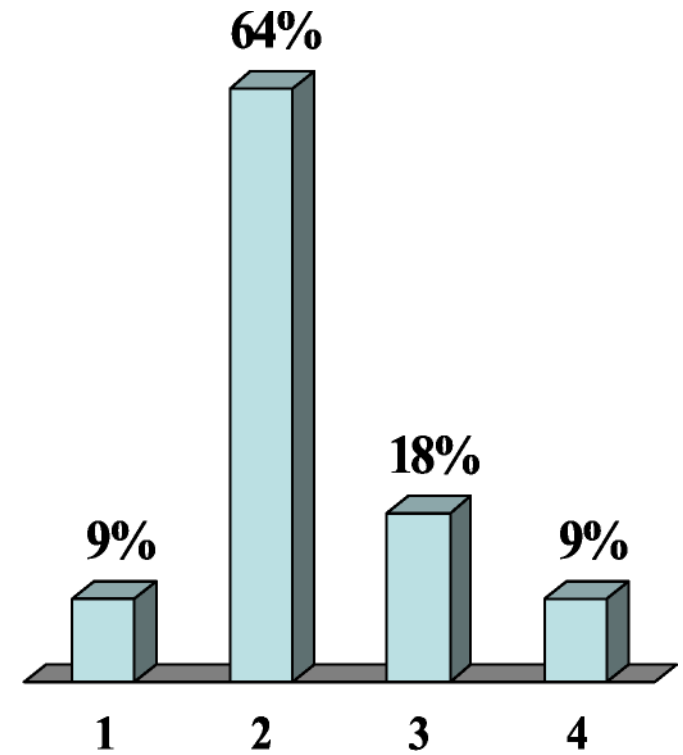
3. Will be harder than

normal, too discouraging

4. Will be harder than

normal for some other

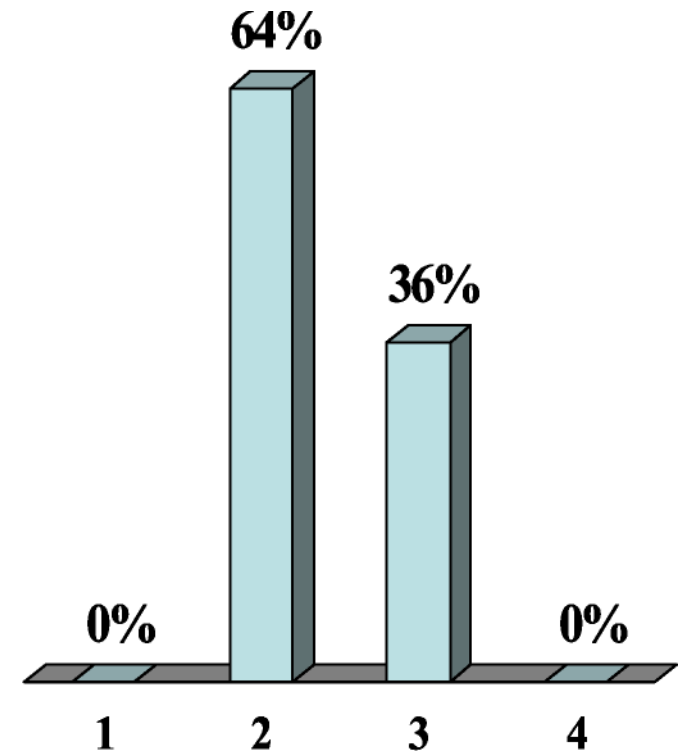
reason



In terms of addressing these issues

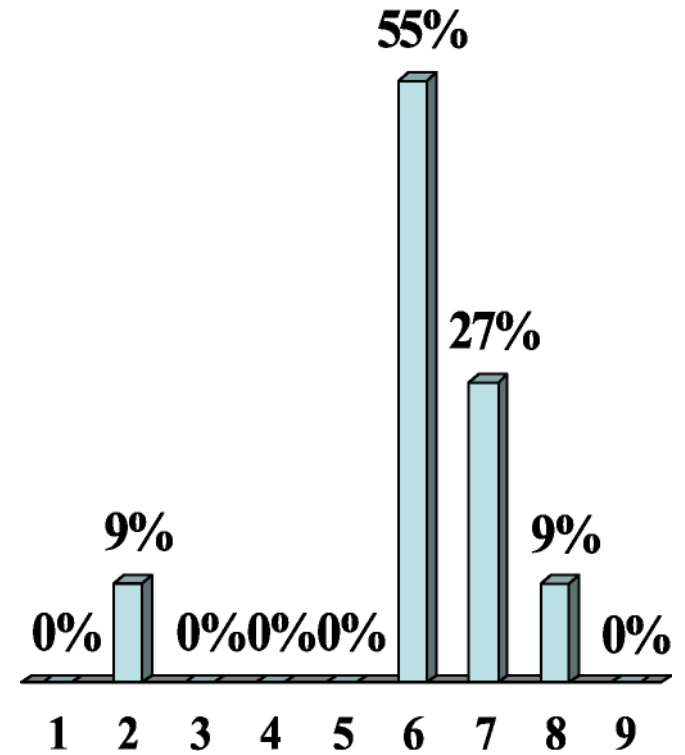
the public I know

1. Believes it should be left to private charities
2. Believes it should be a partnership of private charities and public agencies
3. Believes it is a fundamental responsibility of government with supplements by private charities
4. Other



In terms of people I know

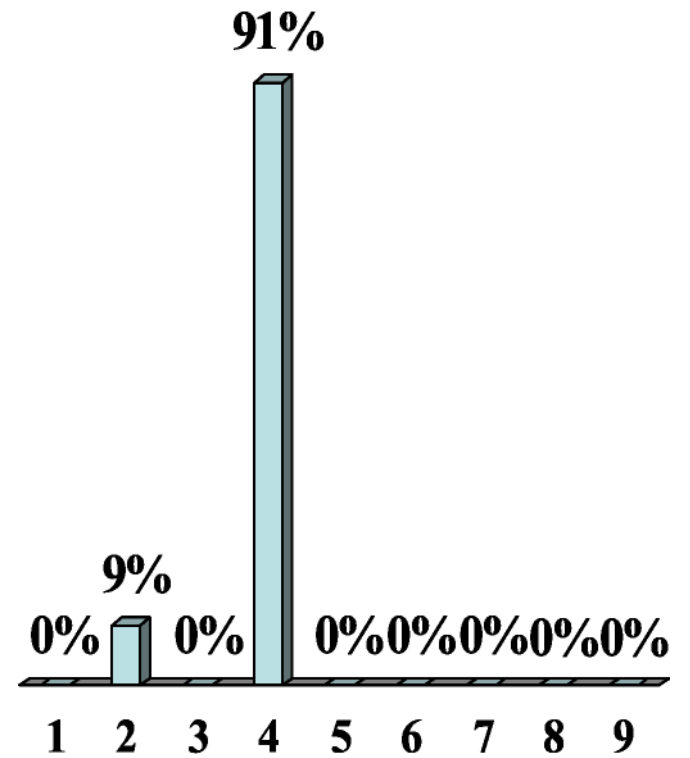
1. Most believe private charity has adequate funds to address these issue
2. Most people believe the state or federal government adequately fund these services
3. 1 and 2
4. Most know private funds aren't nearly enough
5. Most know the state and feds are cutting back
6. 4 and 5
7. 1 and 5
8. 2 and 4
9. Some other view



The issue that County Government should

lead on is...

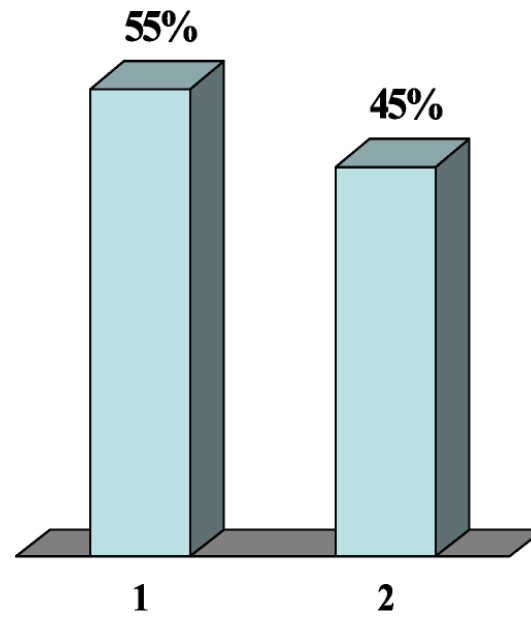
1. Child abuse
2. Developmentally disabled
3. Domestic violence
4. Health access
5. Homelessness
6. Mental illness
7. Substance abuse
8. Other
9. None



Would you consider taking a portion of Penny for Pinellas to spend on health issues of concern to the broad community...

1. Yes

2. No



HHS poll - Registered Voters

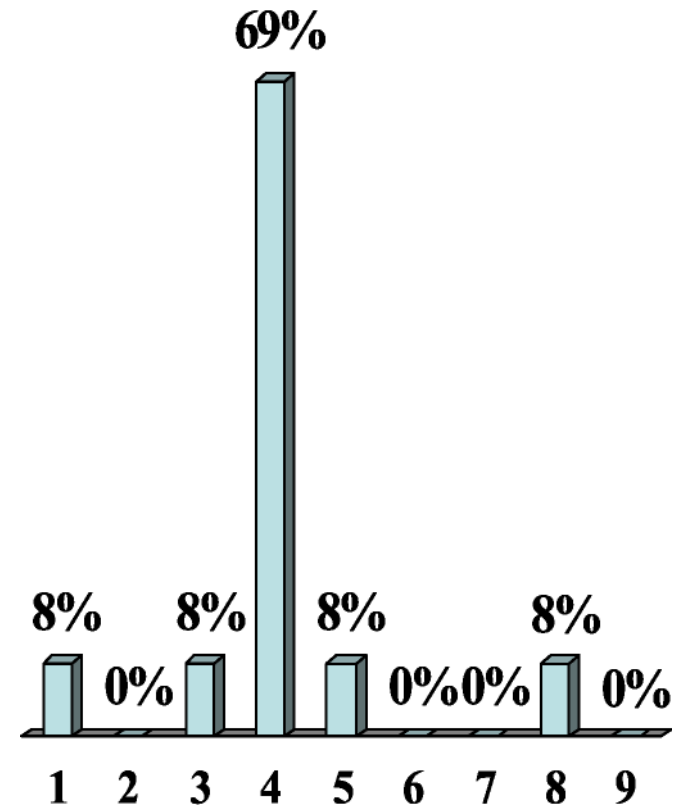
Focus Group

Mid County Session 3 Vers 2

The issue I would most like to see

addressed is...

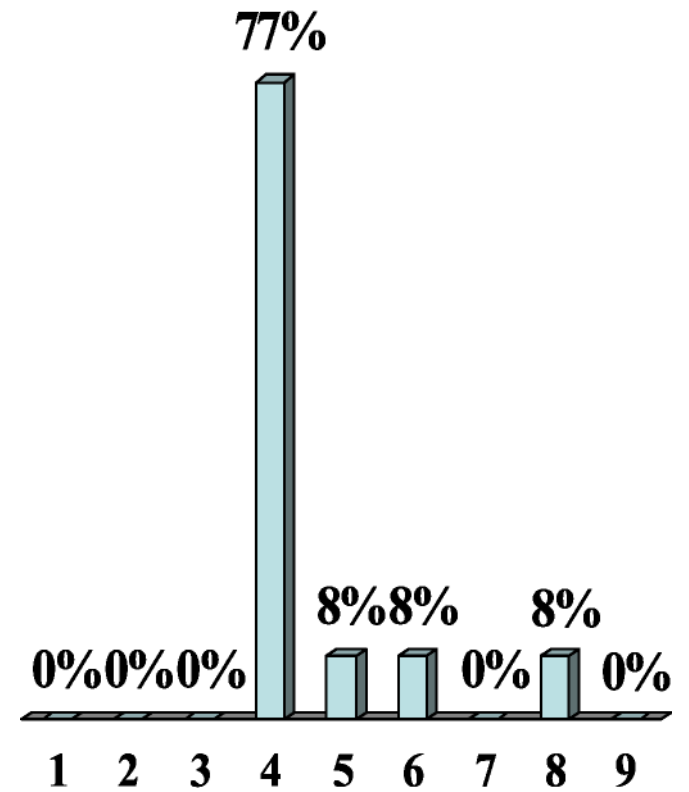
1. Child abuse
2. Developmentally disabled
3. Domestic violence
4. Health access
5. Homelessness
6. Mental illness
7. Substance abuse
8. Other
9. None



The issue I would most likely pay

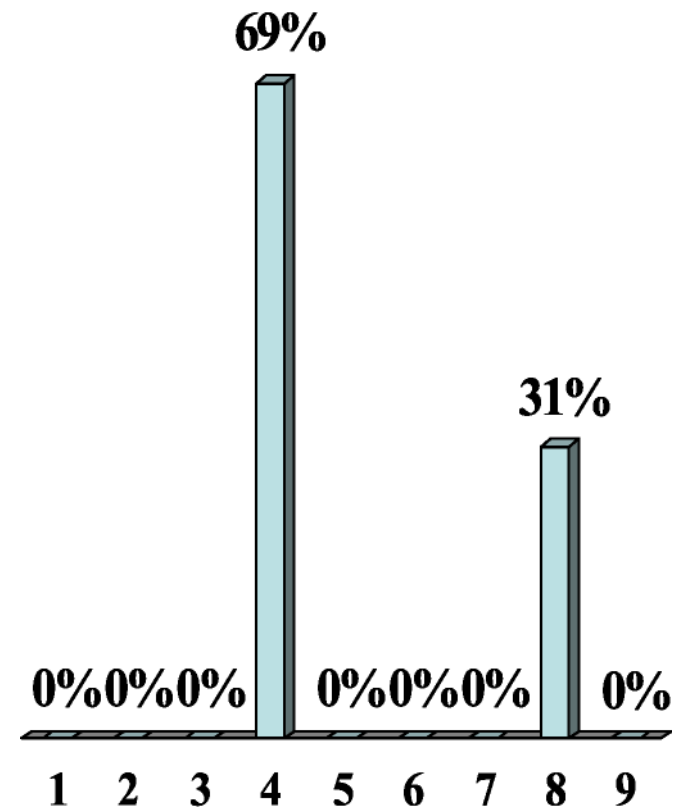
additional taxes to impact is...

1. Child abuse
2. Developmentally disabled
3. Domestic violence
4. Health access
5. Homelessness
6. Mental illness
7. Substance abuse
8. Other
9. None



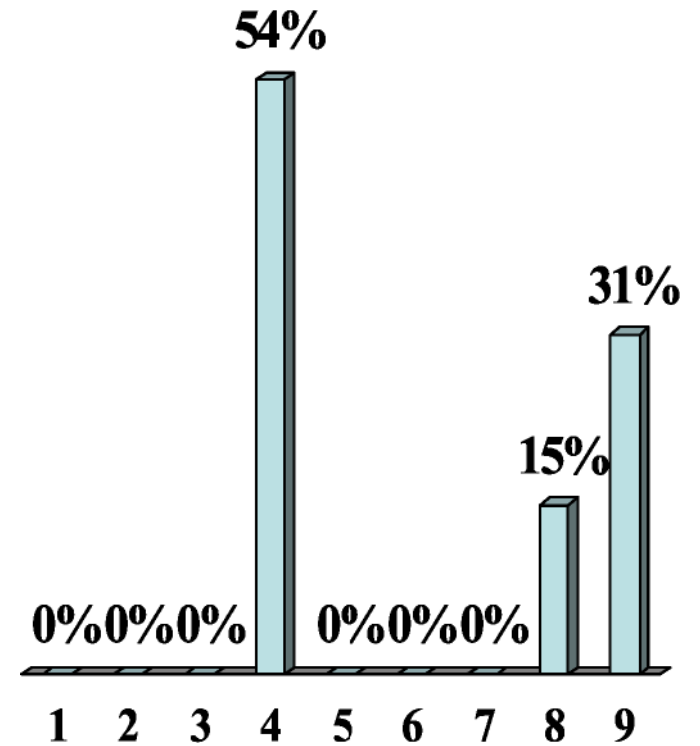
The issue people I know would most likely be willing to pay additional taxes to impact is...

1. Child abuse
2. Developmentally disabled
3. Domestic violence
4. Health access
5. Homelessness
6. Mental illness
7. Substance abuse
8. Other
9. None



If given the choice of a specialized fund for a specific issue or a general fund for all of them, people I know would most likely choose...

1. Child abuse
2. Developmentally disabled
3. Domestic violence
4. Health access
5. Homelessness
6. Mental illness
7. Substance abuse
8. Other
9. General fund



Of the health and human services issues we

have discussed the public is...

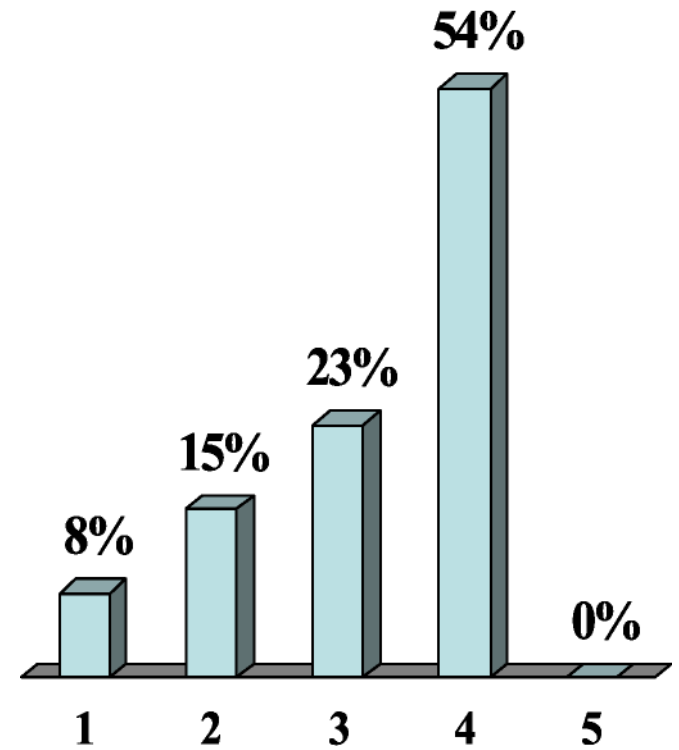
1. Fully aware

2. Somewhat aware

3. Unsure

4. Mostly unaware

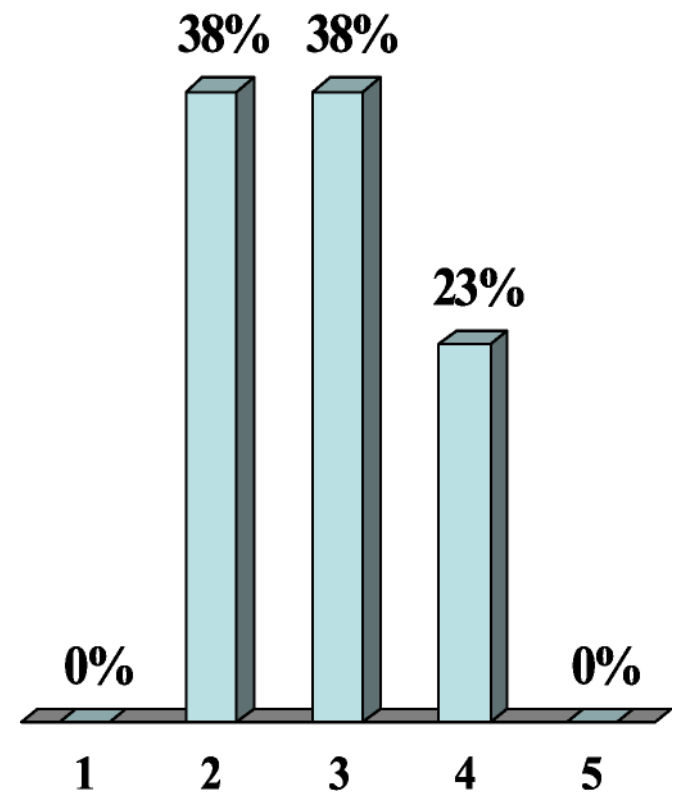
5. Fully unaware



If the public understood these issues how likely are they to support local government

action

- 1. Highly likely
- 2. Likely
- 3. Unsure/maybe
- 4. Unlikely
- 5. Highly unlikely



If the public understood these issues how likely are

they to support local government action that would

require a local tax increase

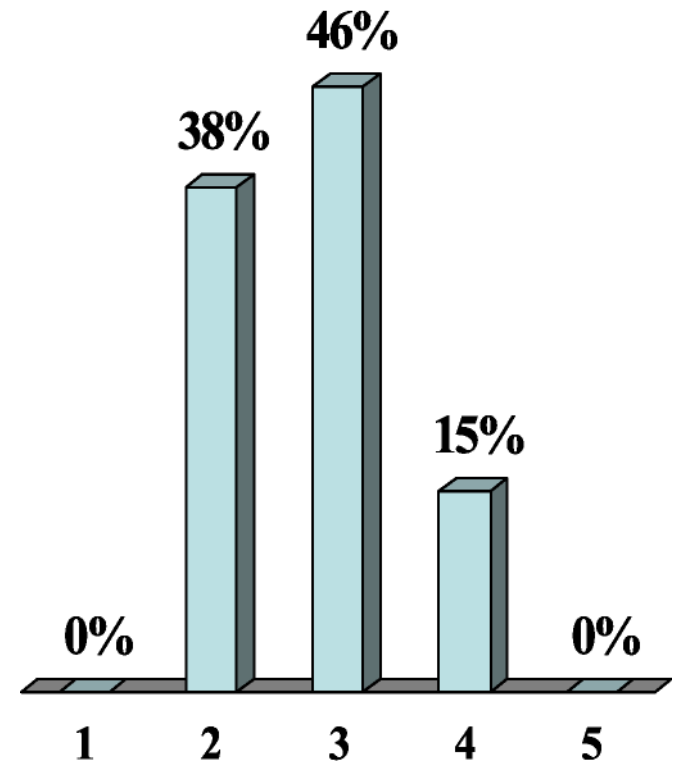
1. Highly likely

2. Likely

3. Unsure/maybe

4. Unlikely

5. Highly unlikely



Informing people about these

issues ...

1. Just a matter of a good

information effort

2. Will be harder than

normal, people had rather

not know

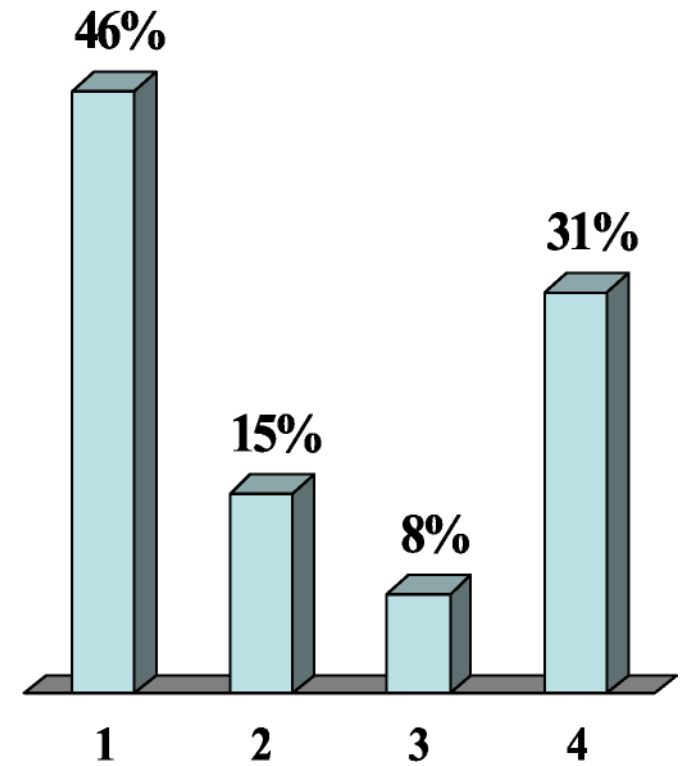
3. Will be harder than

normal, too discouraging

4. Will be harder than

normal for some other

reason



In terms of addressing these issues

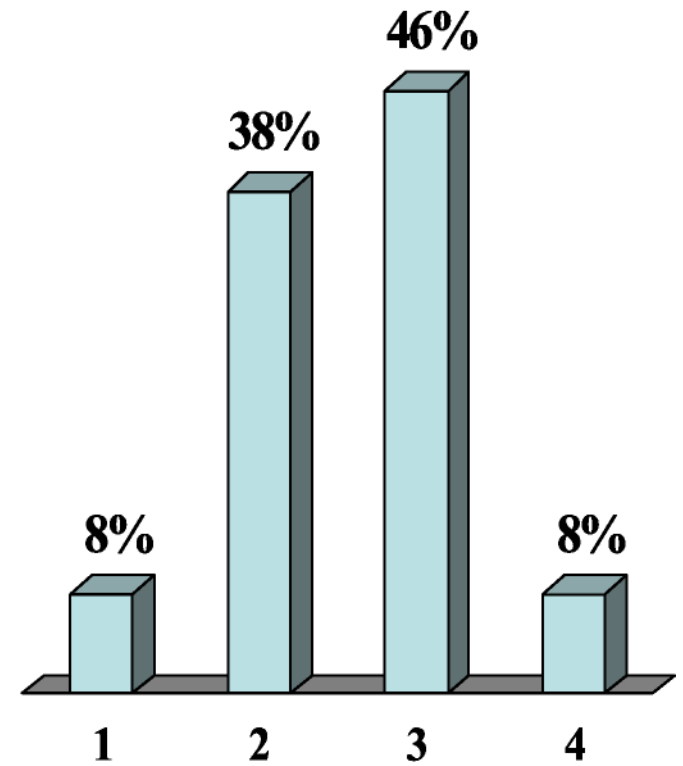
the public I know

1. Believes it should be left to  
private charities

2. Believes it should be a  
partnership of private charities  
and public agencies

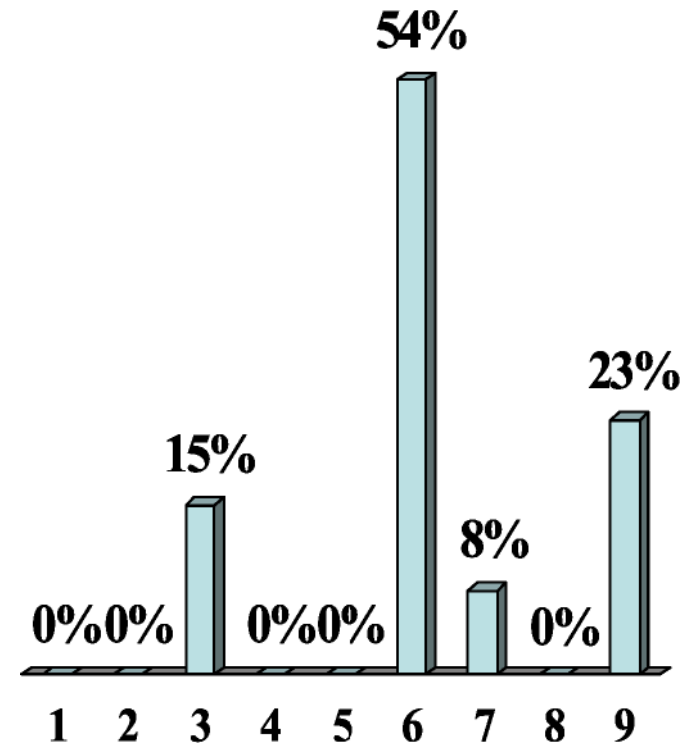
3. Believes it is a fundamental  
responsibility of government  
with supplements by private  
charities

4. Other



In terms of people I know

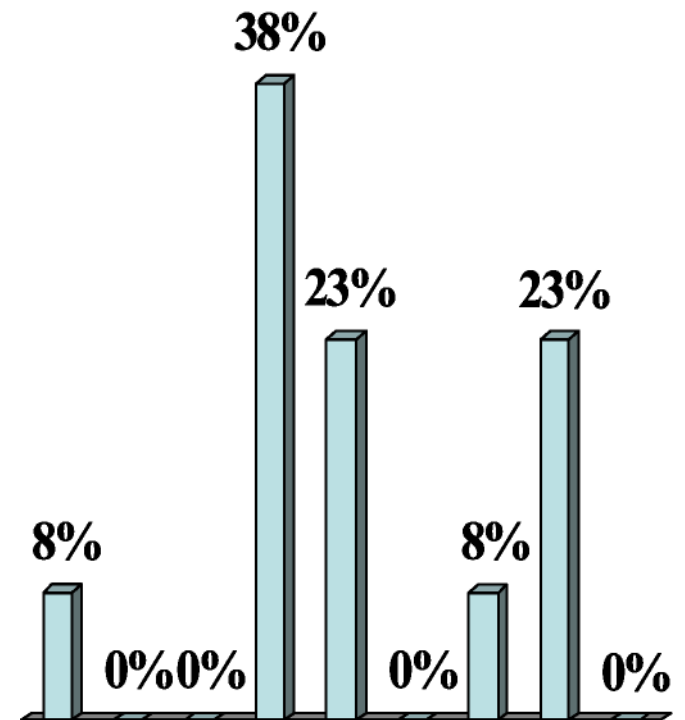
1. Most believe private charity has adequate funds to address these issue
2. Most people believe the state or federal government adequately fund these services
3. 1 and 2
4. Most know private funds aren't nearly enough
5. Most know the state and feds are cutting back
6. 4 and 5
7. 1 and 5
8. 2 and 4
9. Some other view



The issue that County Government should

lead on is...

1. Child abuse
2. Developmentally disabled
3. Domestic violence
4. Health access
5. Homelessness
6. Mental illness
7. Substance abuse
8. Other
9. None



1 2 3 4 5 6 7 8 9

HHS poll Registered Voters

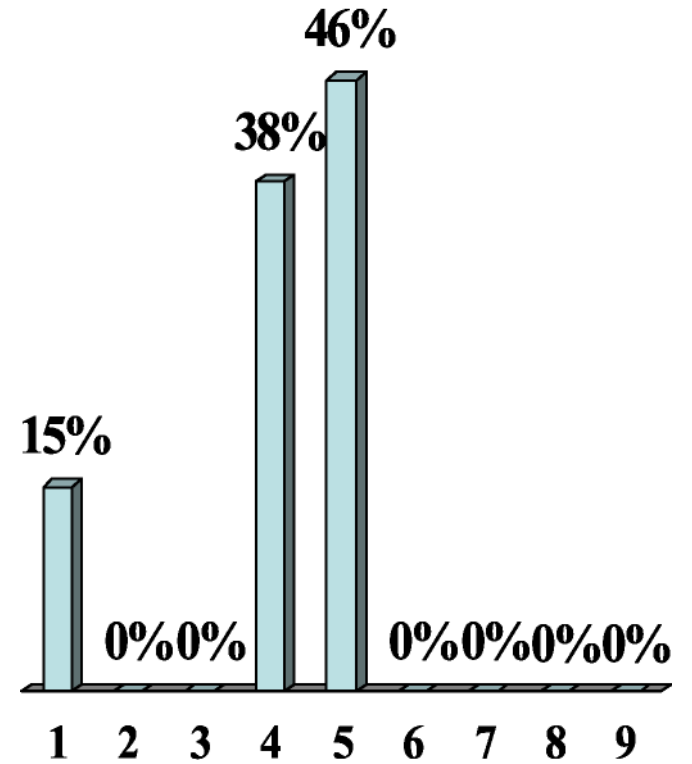
Focus Group

South County, Session 3, Vers 2

The issue I would most like to see

addressed is...

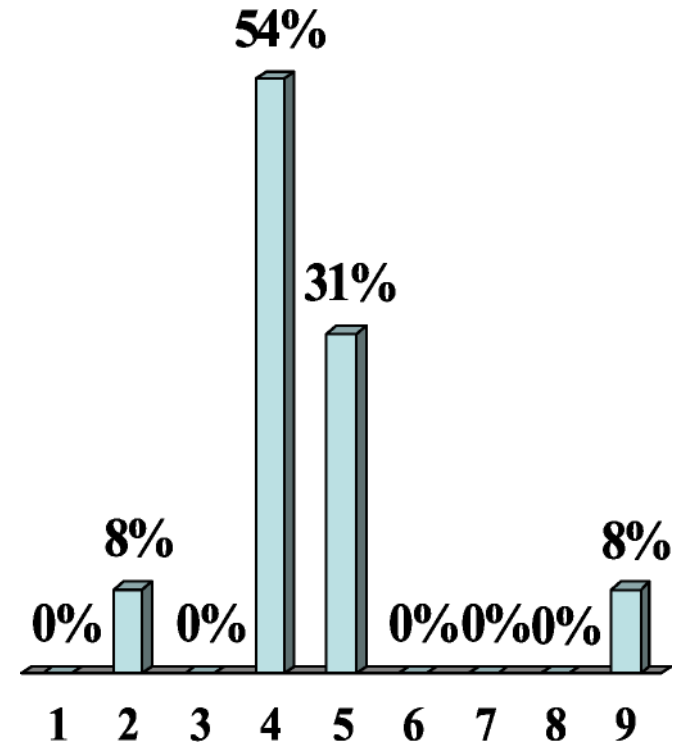
1. Child abuse
2. Developmentally disabled
3. Domestic violence
4. Health access
5. Homelessness
6. Mental illness
7. Substance abuse
8. Other
9. None



The issue I would most likely pay

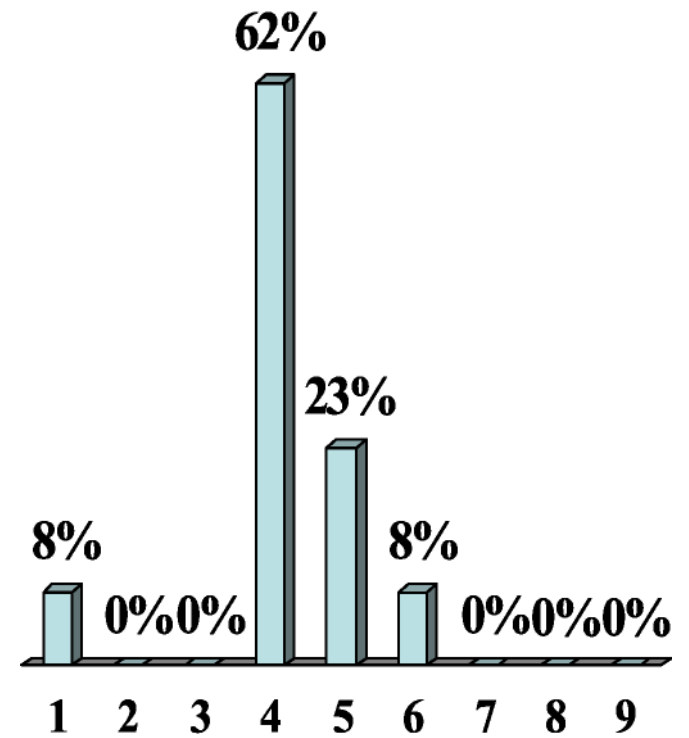
additional taxes to impact is...

1. Child abuse
2. Developmentally disabled
3. Domestic violence
4. Health access
5. Homelessness
6. Mental illness
7. Substance abuse
8. Other
9. None



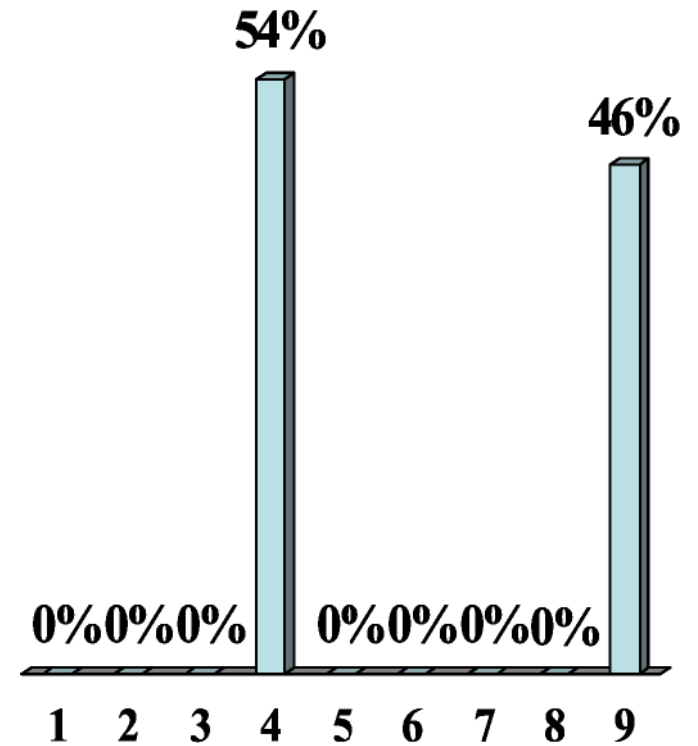
The issue people I know would most likely be  
willing to pay additional taxes to impact is...

1. Child abuse
2. Developmentally disabled
3. Domestic violence
4. Health access
5. Homelessness
6. Mental illness
7. Substance abuse
8. Other
9. None



If given the choice of a specialized fund for a specific issue or a general fund for all of them, people I know would most likely choose...

1. Child abuse
2. Developmentally disabled
3. Domestic violence
4. Health access
5. Homelessness
6. Mental illness
7. Substance abuse
8. Other
9. General fund



Of the health and human services issues we

have discussed the public is...

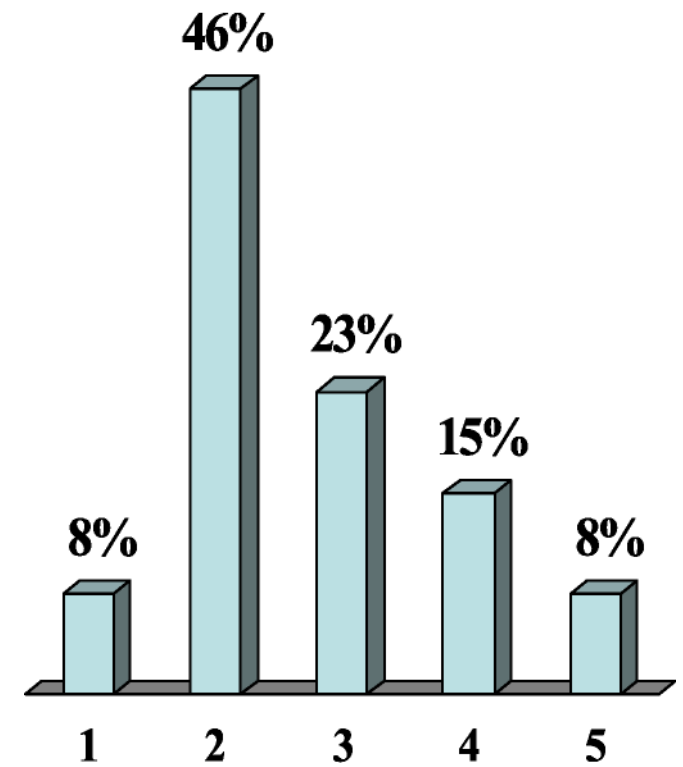
1. Fully aware

2. Somewhat aware

3. Unsure

4. Mostly unaware

5. Fully unaware



If the public understood these issues how

likely are they to support local government

action

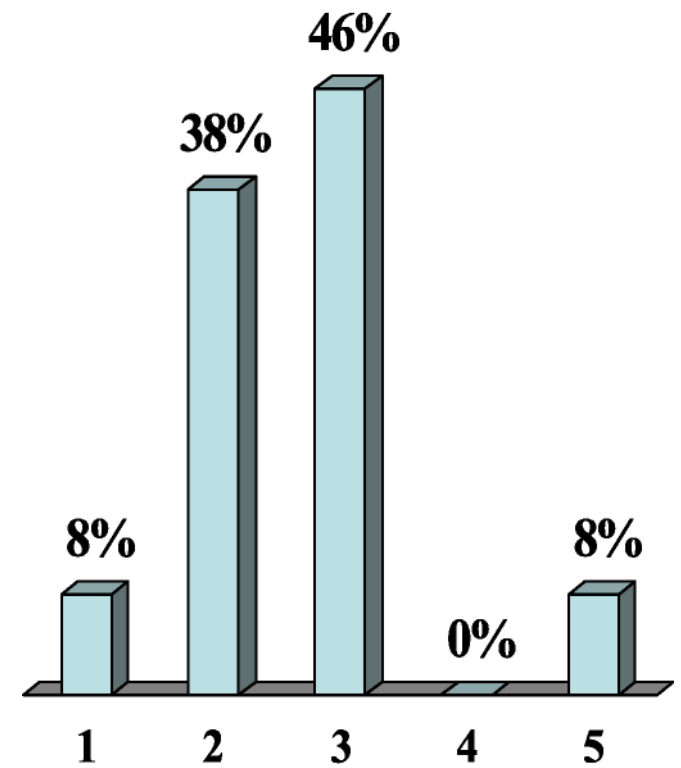
1. Highly likely

2. Likely

3. Unsure/maybe

4. Unlikely

5. Highly unlikely



If the public understood these issues how likely are

they to support local government action that would

require a local tax increase

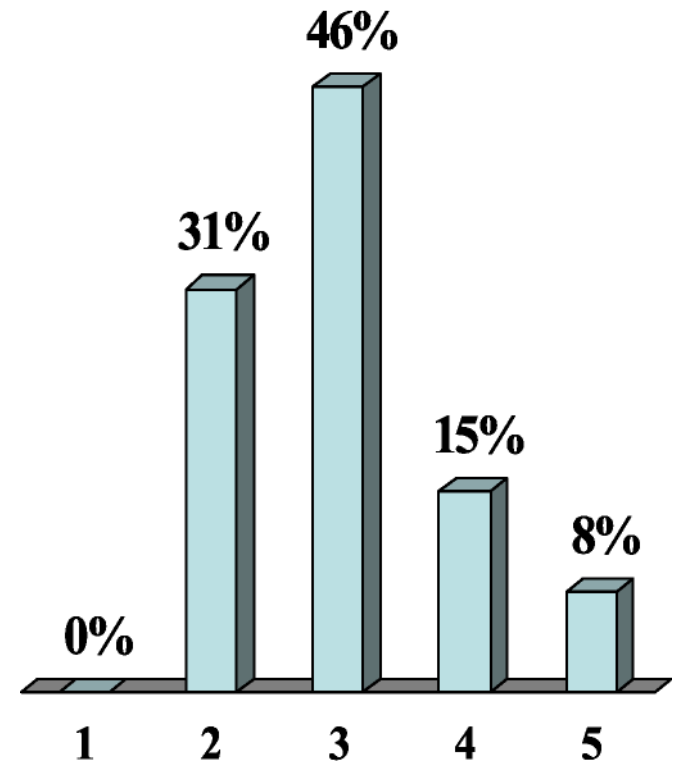
1. Highly likely

2. Likely

3. Unsure/maybe

4. Unlikely

5. Highly unlikely



Informing people about these

issues ...

1. Just a matter of a good

information effort

2. Will be harder than

normal, people had rather

not know

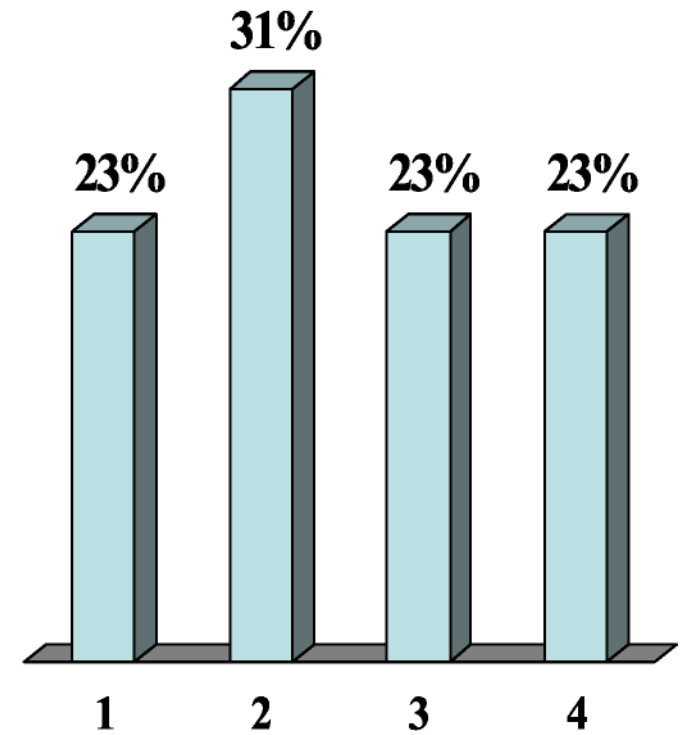
3. Will be harder than

normal, too discouraging

4. Will be harder than

normal for some other

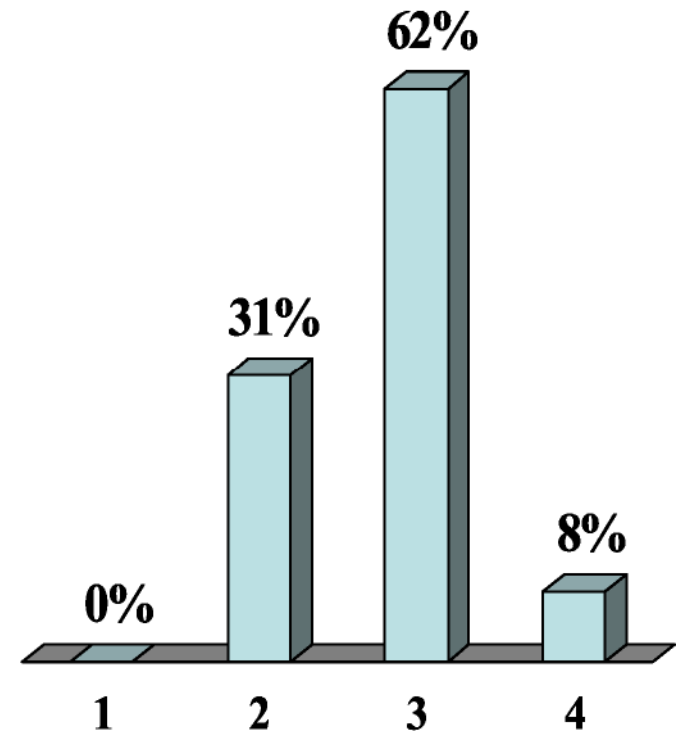
reason



In terms of addressing these issues

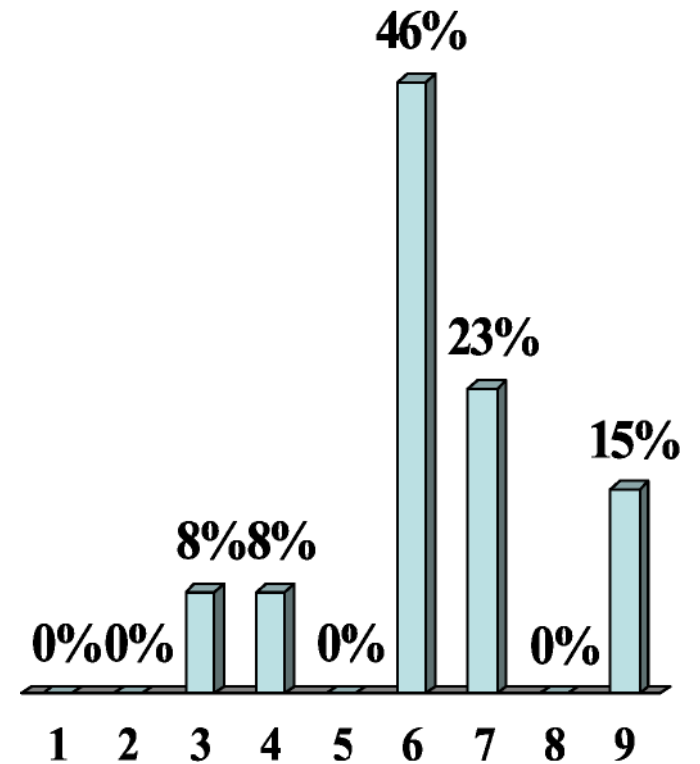
the public I know

1. Believes it should be left to private charities
2. Believes it should be a partnership of private charities and public agencies
3. Believes it is a fundamental responsibility of government with supplements by private charities
4. Other



In terms of people I know

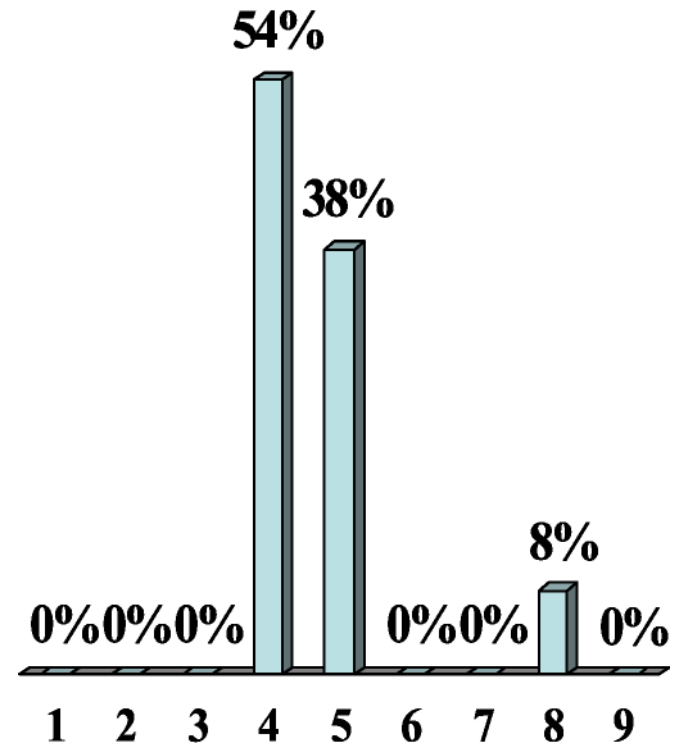
1. Most believe private charity has adequate funds to address these issue
2. Most people believe the state or federal government adequately fund these services
3. 1 and 2
4. Most know private funds aren't nearly enough
5. Most know the state and feds are cutting back
6. 4 and 5
7. 1 and 5
8. 2 and 4
9. Some other view



The issue that County Government should

lead on is...

1. Child abuse
2. Developmentally disabled
3. Domestic violence
4. Health access
5. Homelessness
6. Mental illness
7. Substance abuse
8. Other
9. None



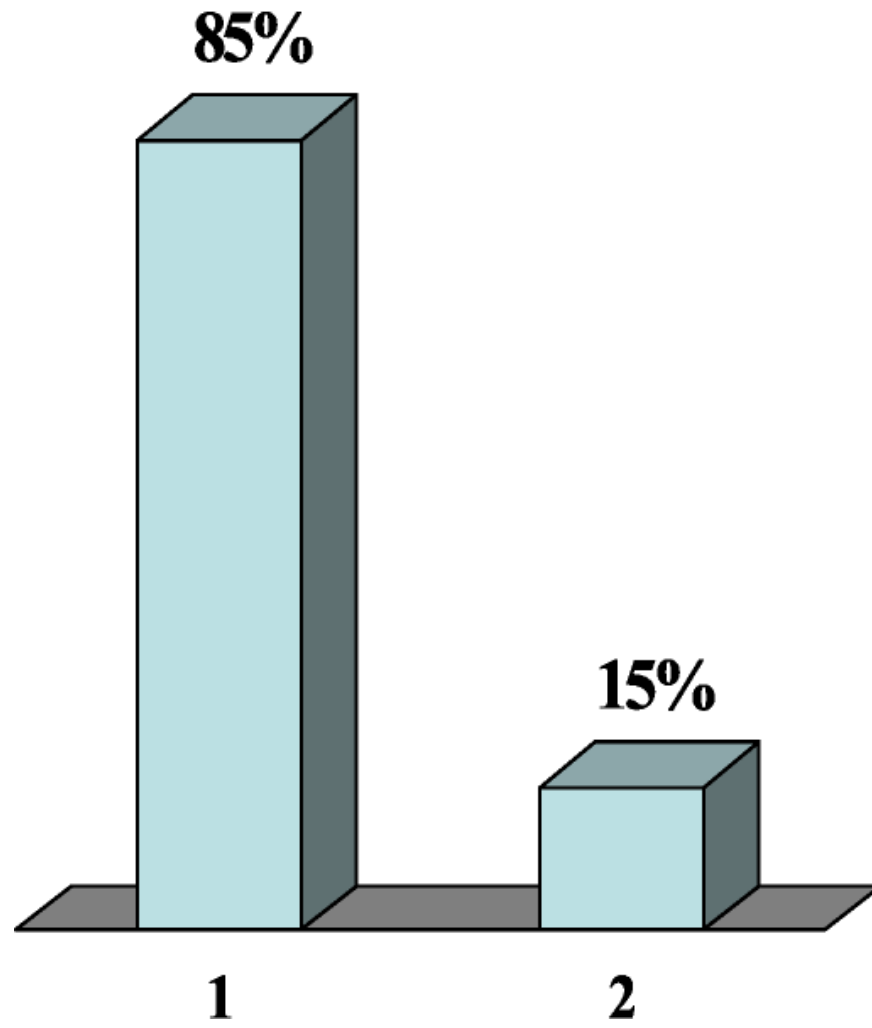
Would you consider taking a portion of

Penny for Pinellas to spend on health issues

of concern to the broad community...

1. Yes

2. No



## Appendix C: Possible “New” Public Funding Strategies

- Food and beverage tax
- Gas tax / general revenue swap
- CDBG funds – ongoing commitment of funds
- Other grant funding set-asides or special designations
- Sales tax
- Increased general revenue support from local municipalities
- Community Redevelopment Area (CRA), Increased Housing Set Aside
- Permit fees
- Doc Stamps – revenue from the sale of real property
- Adopting an in-lieu fee as part of the inclusionary zoning ordinance
- Adopting a linkage fee for commercial development
- Requiring that all new coastal zone housing include housing units for low and very low income households or in-lieu fees sufficient to develop such housing
- C countywide & citywide property tax growth designation
- Establishing/increasing and dedicating a portion of a resort tax
- Levying fees on water usage above a first-tier (life-line) base amount  
*(designate revenue for utility assistance)*
- Advocating for additional fees on luxury items
- Local general obligation bonds for housing
- Parking users tax
  - Parking meters
  - Code enforcement board – replace GR
  - Electrical, natural gas, water and phone Utility tax in unincorporated + getting cities on board

- Special taxing district
- Franchise fees
- Impact fees cause and effect