



October 2018 Update

Lake Seminole Restoration Project

Project Overview

Pinellas County is implementing a programmed Capital Improvement Project (CIP) to remove approximately 900,000 cubic yards of accumulated organic sediment causing water quality and habitat degradation. The removal of the organic sediments, based on pre-construction sediment sampling, is expected to eliminate 54 tons of total phosphorus and 311 tons of total nitrogen from the lake and reduce nitrogen loads by an estimated 56% to Long Bayou and Boca Ciega Bay. The County is currently working with a contractor to finalize design and permitting and should be moving forward to the construction phase in late 2018. An information session about the project will be held on October 17th from 4pm-8pm at Holland G. Mangum Recreation Complex-9100 113th St N. Seminole FL 33773.

Project Schedule – Next Steps

Schedule is preliminary and will be updated as the project progresses

- | | |
|---------------------------------------|--------------------|
| • Design and Permitting | August 2018 |
| • Begin Site Work at Dewatering Area | December 2018 |
| • Begin In-Lake Dredging Operation | July - August 2019 |
| • Complete In-Lake Dredging Operation | December 2021 |
| • Site Restoration Complete | March 2023 |



Project ID# 000157A

Project Location

Lake Seminole

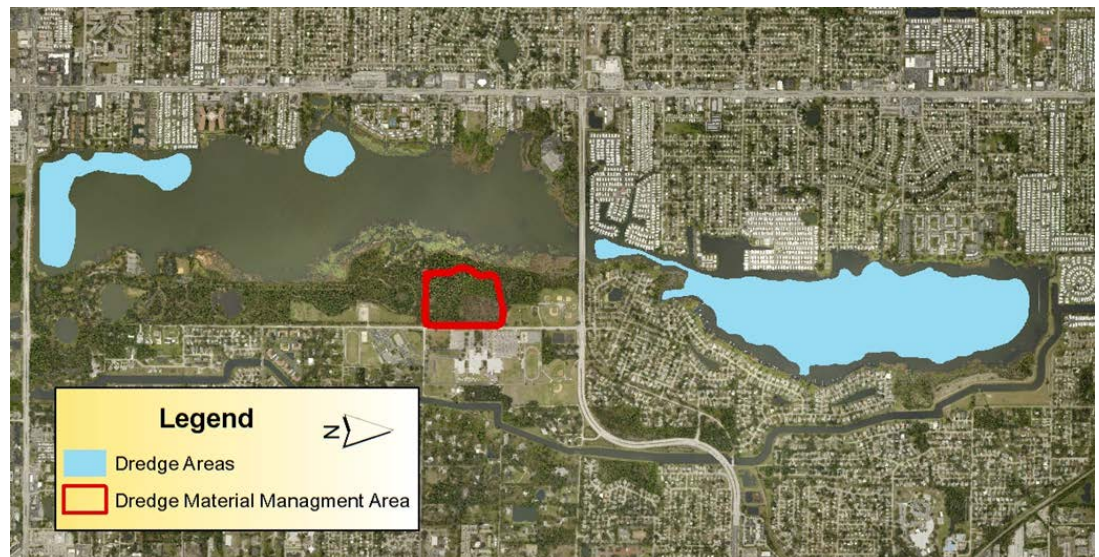
Project Contact

Robert Burnes
Project Manager
Environmental Management

Public Works
22211 US Hwy 19 N
Bldg 10
Clearwater, FL 33765
(727) 453-3149
rburnes@pinellascounty.org
www.pinellascounty.org/publicworks/maps-projects.htm

More Information

Visit:
www.pinellascounty.org/publicworks/maps-projects.htm



Additional Info

The main goals of the Lake Seminole Restoration Project are to reduce nutrient inputs into the lake, remove existing in-lake nutrients, and restore wetland and upland areas adjacent to the lake to improve in-lake water quality, ensure healthy fish and wildlife populations, and maintain recreational uses.

Lake Seminole is a 684-acre hypereutrophic shallow lake located in the west central Pinellas County. The lake receives runoff from approximately 3,500 acres of urban land. The contributing watershed is almost entirely developed with residential and commercial land use dominating the landscape. Created in the late 1940's by damming off the estuarine backwater area of the Long Bayou. Lake level is maintained by weir located on the south end of the lake along the north side of Park Blvd. The lake and adjacent Lake Seminole Park provide many recreational activities including boating, fishing, bird watching, and a variety of other water activities.

The dredge portion of the Lake Seminole Restoration Project will improve water quality in Lake Seminole through the removal of nutrient-enriched (phosphorus and nitrogen) sediments that are contributing to elevated nutrients in the water column and persistent algae blooms. The removal of the sediments from the lake will also improve in-lake habitats by reducing the available nutrients for algae and vegetation growth. The dredged sediments will be deposited in a 20 acre settling area called a dredge material management area (DMMA) to dewater and consolidate. The DMMA will be adjacent to the eastern edge of the lake near 98th St. and 94th Ave.



July 2018 Update

Lake Seminole Restoration Project



Project ID# 000157A

Project Location

Lake Seminole

Project Contact

Robert Burnes
Project Manager
Environmental Management

Public Works
22211 US Hwy 19 North
Bldg 10
Clearwater, FL 33765
(727) 464-3149
rburnes@pinellascounty.org

More Information

Visit:
[www.pinellascounty.org/
publicworks/maps-
projects.htm](http://www.pinellascounty.org/publicworks/maps-projects.htm)

Project Overview

Pinellas County is implementing a programmed Capital Improvement Project (CIP) to remove approximately 900,000 cubic yards of accumulated organic sediment causing water quality and habitat degradation. The removal of the organic sediments, based on pre-construction sediment sampling, is expected to eliminate 54 tons of total phosphorus and 311 tons of total nitrogen from the lake and reduce nitrogen loads by an estimated 56% to Long Bayou and Boca Ciega Bay. The county is currently working with a contractor to finalize design and permitting and should be moving forward to the construction phase in late 2018.

Project Schedule – Next Steps

Schedule is preliminary and will be updated as the project progresses

- Design Start: July 2017
- Design End: August 2018
- Construction Start: December 2018
- Construction End: November 2021



Additional Info

The main goals of the Lake Seminole Restoration Project are to reduce nutrient inputs into the lake, remove existing in-lake nutrients, and restore wetland and upland areas adjacent to the lake to improve in-lake water quality, ensure healthy fish and wildlife populations, and maintain recreational uses.

Lake Seminole is a 684-acre hypereutrophic shallow lake located in the west central Pinellas County. The lake receives runoff from approximately 3,500 acres of urban land. The contributing watershed is almost entirely developed with residential and commercial land use dominating the landscape. Created in the late 1940s by damming off the estuarine backwater area of the Long Bayou. The lake level is maintained by weir located on the south end of the lake along the north side of Park Blvd. The lake and adjacent Lake Seminole Park provide many recreational activities including boating, fishing, bird watching, and a variety of other water activities.

The dredge portion of the Lake Seminole Restoration Project will improve water quality in Lake Seminole through the removal of nutrient-enriched (phosphorus and nitrogen) sediments that are contributing to elevated nutrients in the water column and persistent algae blooms. The removal of the sediments from the lake will also improve in-lake habitats by reducing the available nutrients for algae and vegetation growth. The dredged sediments will be deposited in a 20-acre settling area called a dredge material management area (DMMA) to dewater and consolidate. The DMMA will be adjacent to the eastern edge of the lake near 98th St. and 94th Ave.