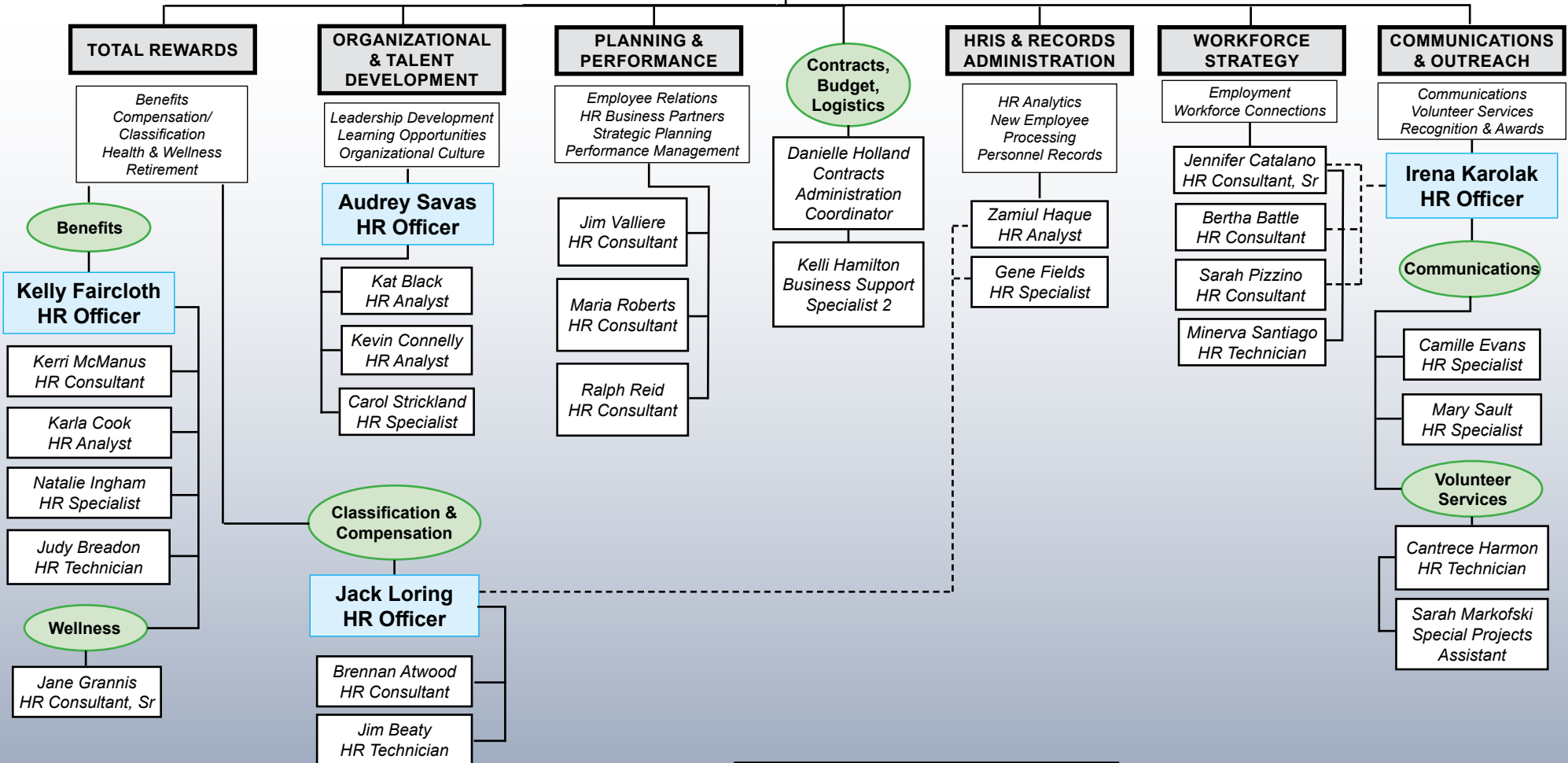




# Human Resources Organization Chart

## UNIFIED PERSONNEL SYSTEM BOARD

**Human Resources**  
*Helping U Succeed*



----- Denotes temporary oversight

# Human Resources Organization Chart

## Unified Personnel System Board

### Kimberly R. Crum, Director

Maria Ciro, Assistant Director  
Peggy Sellards, Executive Assistant 3

### Total Rewards

#### Benefits, Retirement

Kelly Faircloth, HR Officer  
Kerri McManus, HR Consultant  
Karla Cook, HR Analyst  
Natalie Ingham, HR Specialist  
Judy Breadon, HR Technician

#### Health and Wellness

Jane Grannis, HR Consultant Senior

#### Compensation/Classification

Jack Loring, HR Officer  
Brennan Atwood, HR Consultant  
Jim Beaty, HR Technician

### Organizational and Talent Development

*Leadership Development, Learning Opportunities, Organizational Culture*

Audrey Savas, HR Officer  
Kat Black, HR Analyst  
Kevin Connelly, HR Analyst  
Carol Strickland, HR Specialist

### Planning and Performance

*Employee Relations, HR Business Partners, Strategic Planning, Performance Management*

Jim Valliere, HR Consultant  
Maria Roberts, HR Consultant  
Ralph Reid, HR Consultant

#### Contracts, Budgets, Logistics

Danielle Holland, Contracts Administration Coordinator  
Kelli Hamilton, Business Support Specialist

### HRIS and Records Administration

*HR Analytics, New Employee Processing, Personnel Records*

Jack Loring, HR Officer (*temporary oversight*)  
Zamiul Haque, HR Analyst  
Gene Fields, HR Specialist

### Workforce Strategy

*Employment, Workforce Connections*

Irena Karolak, HR Officer (*temporary oversight*)  
Jennifer Catalano, HR Consultant Senior  
Bertha Battle, HR Consultant  
Sarah Pizzino, HR Consultant  
Minerva Santiago, HR Technician

### Communications and Outreach

*Communication Strategies, Volunteer and Intern Programs*

Irena Karolak, HR Officer

#### Communications

Camille Evans, HR Specialist  
Mary Sault, HR Specialist

#### Volunteer Services

Cantrece Harmon, HR Technician  
Sarah Markofski, Special Projects Assistant